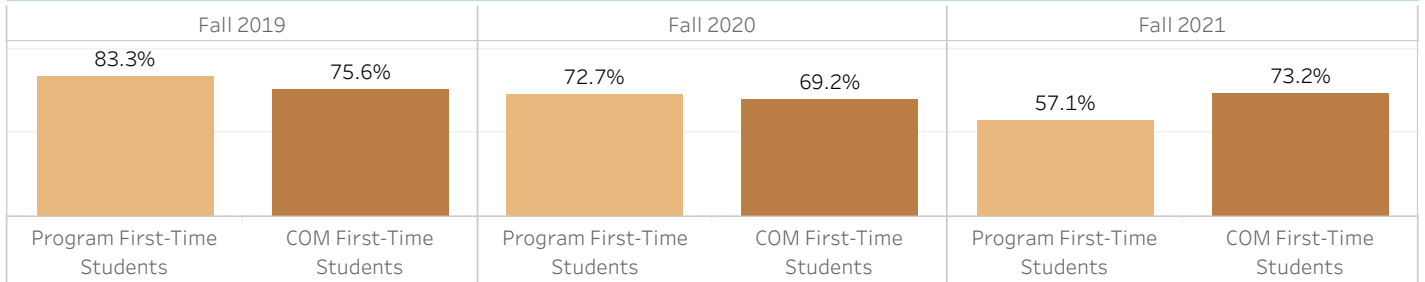


First Time Students Fall-to-Spring Persistence

First Time English Students and all COM Students



First Time English Students by Major

	Headcount First Time Students			% Fall-to-Spring Persistence		
	Fall 2019	Fall 2020	Fall 2021	Fall 2019	Fall 2020	Fall 2021
English	12			83.3%		
English Transfer		11	7		72.7%	57.1%
Total	12	11	7	83.3%	72.7%	57.1%

First Time English Students by Race/Ethnicity

	Headcount First Time Students			% Fall-to-Spring Persistence		
	Fall 2019	Fall 2020	Fall 2021	Fall 2019	Fall 2020	Fall 2021
Asian	1		1	100.0%		100.0%
Hispanic	2	6	4	100.0%	50.0%	25.0%
White	9	5	2	77.8%	100.0%	100.0%
Total (including Masked)	12	11	7	83.3%	72.7%	57.1%

First Time English Program Students by Age

	Headcount First Time Students			% Fall-to-Spring Persistence		
	Fall 2019	Fall 2020	Fall 2021	Fall 2019	Fall 2020	Fall 2021
Under 18	3	1		100.0%	100.0%	
18-19	6	8	6	83.3%	87.5%	50.0%
20-24	3			66.7%		
30-39		1			0.0%	
25-29			1			100.0%
40-49		1			0.0%	
Total (including Masked)	12	11	7	83.3%	72.7%	57.1%

First Time English Program Students by Gender

	Headcount First Time Students			% Fall-to-Spring Persistence		
	Fall 2019	Fall 2020	Fall 2021	Fall 2019	Fall 2020	Fall 2021
Female	4	3	4	100.0%	33.3%	75.0%
Male	7	8	3	71.4%	87.5%	33.3%
Unknown	1			100.0%		
Total (including Masked)	12	11	7	83.3%	72.7%	57.1%

Awards in English Majors 2019-20 through 2021-22

Comparison of Units Completed with all COM Awards of the Same Type

Award	Type	Count of Award	Program Avg Units Earned	COM Avg Units Earned
English Transfer	AA-T	9	69.7	71.0

Comparison of Years to Award with all COM Awards of the Same Type

Award	Type	Count of Award	Program Avg Years to Deg	COM Avg Years to Deg
English Transfer	AA-T	9	7.5	4.6

Timeframe to Award by Category

Award	Type	Count of Award	2 years or less	> 3 to 4 years	> 4 to 5 years	> 5 years
English Transfer	AA-T	9	22.2%	11.1%	22.2%	44.4%

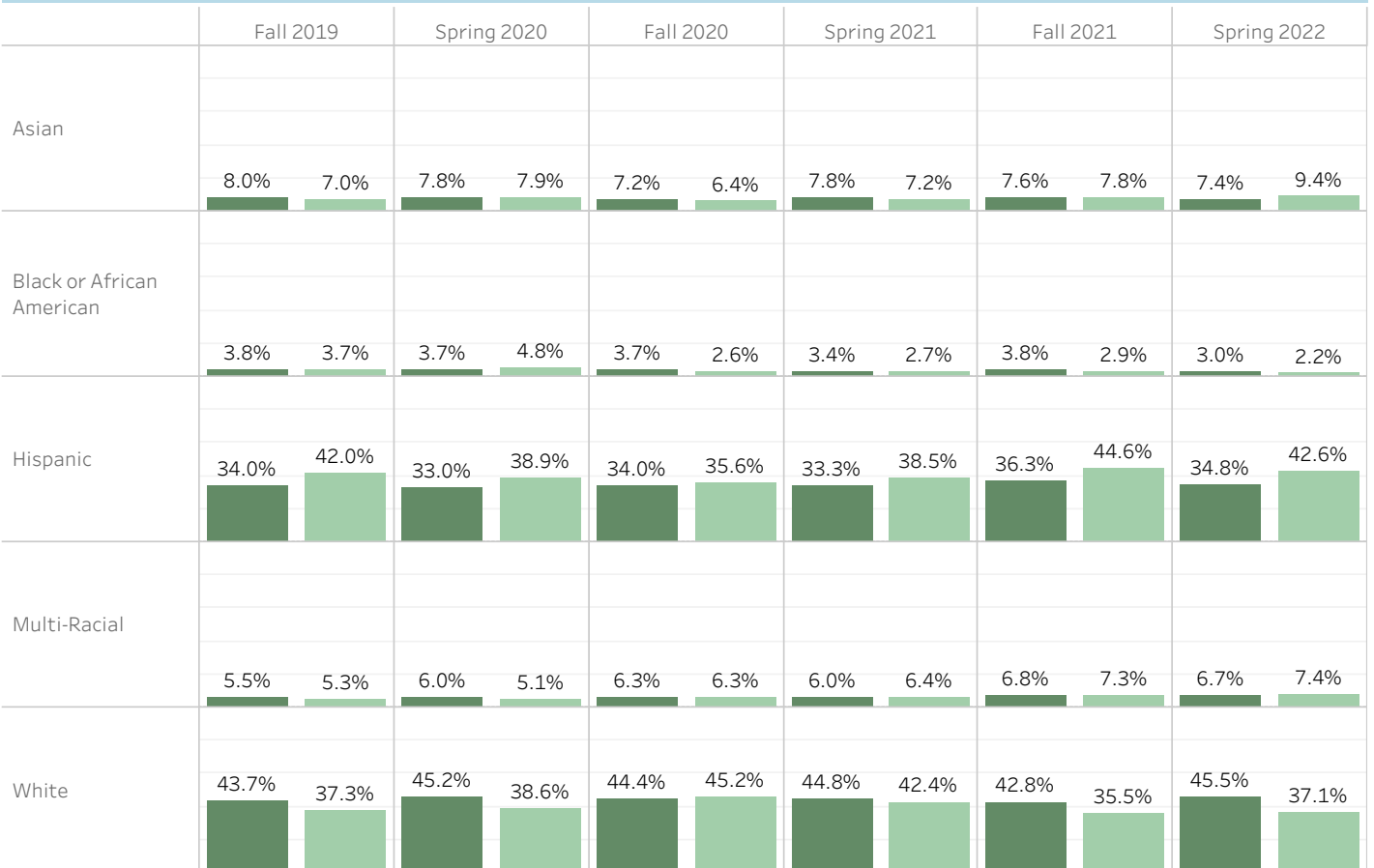
Enrollments by Race/Ethnicity

Course Enrollments in English Courses by Race/Ethnicity



	Fall 2019	Spring 2020	Fall 2020	Spring 2021	Fall 2021	Spring 2022
American Indian or Alaska Native	2	2	3	2	1	
Asian	73	74	57	55	64	73
Black or African American	39	45	23	21	24	17
Hispanic	441	364	316	296	367	332
Multi-Racial	56	48	56	49	60	58
Native Hawaiian or Other Pacific Islander	3	1	1	2		3
None/Unknown	44	40	30	18	15	8
White	392	361	401	326	292	289
Total	1,050	935	887	769	823	780

Comparison of COM and English Enrollments by Race/Ethnicity



Credit course enrollments include students enrolled on first census day and those at the end of the term who received a grade in a course. Course enrollment is not an unduplicated student headcount. A student is counted once for each course enrolled.

*Spring 2020 course enrollment, retention and success numbers may be impacted by the COVID-19 pandemic and transition to remote learning. Students electing to receive an Early Withdrawal ("EW") grade are included in Spring 2020 course enrollment numbers. In course retention and success calculations, EW grades are treated as the same as a traditional "W" grade: "not retained" and "not successful" enrollments, though they are not included in students' GPA calculation.

Enrollments by Age Group

Enrollments in English Courses by Age Group

0% 100%

	Fall 2019	Spring 2020	Fall 2020	Spring 2021	Fall 2021	Spring 2022
Under 18	82	25	64	23	47	17
18-19	442	399	393	319	368	326
20-24	299	285	235	244	225	257
25-29	104	99	71	69	65	68
30-39	71	63	78	70	61	49
40-49	23	37	20	24	26	35
50 and older	29	27	26	20	16	12
None/Unknown					15	16
Total	1,050	935	887	769	823	780

Comparison of COM and English Enrollments by Age Group

% of COM Age % of Dept Age

	Fall 2019		Spring 2020		Fall 2020		Spring 2021		Fall 2021		Spring 2022	
Under 18	8.4%	7.8%	5.6%	2.6%	6.7%	7.2%	4.7%	3.0%	6.0%	5.7%	4.3%	2.2%
18-19	27.6%	42.0%	25.9%	42.7%	28.7%	44.3%	25.3%	41.5%	29.0%	44.7%	25.9%	41.8%
20-24	27.4%	28.6%	31.1%	30.6%	28.7%	26.5%	31.3%	31.7%	27.0%	27.3%	28.1%	32.9%
25-29	11.2%	9.8%	11.5%	10.5%	11.7%	8.0%	12.2%	9.0%	10.3%	7.9%	10.7%	8.7%
30-39	9.9%	6.7%	10.1%	6.7%	10.9%	8.8%	11.6%	9.1%	10.5%	7.4%	11.0%	6.3%
40-49	6.2%	2.2%	5.7%	3.9%	5.4%	2.3%	5.8%	3.1%	6.4%	3.2%	6.8%	4.5%
50 and older	9.1%	2.8%	10.0%	2.9%	7.9%	2.9%	9.2%	2.6%	8.7%	1.9%	11.3%	1.5%
None/Unkn..									2.0%	1.8%	2.1%	2.1%

Credit course enrollments include students enrolled on first census day and those at the end of the term who received a grade in a course. Course enrollment is not an unduplicated student headcount. A student is counted once for each course enrolled.

*Spring 2020 course enrollment, retention and success numbers may be impacted by the COVID-19 pandemic and transition to remote learning. Students electing to receive an Early Withdrawal ("EW") grade are included in Spring 2020 course enrollment numbers. In course retention and success calculations, EW grades are treated as the same as a traditional "W" grade: "not retained" and "not successful" enrollments, though they are not included in students' GPA calculation.

Enrollments by Gender

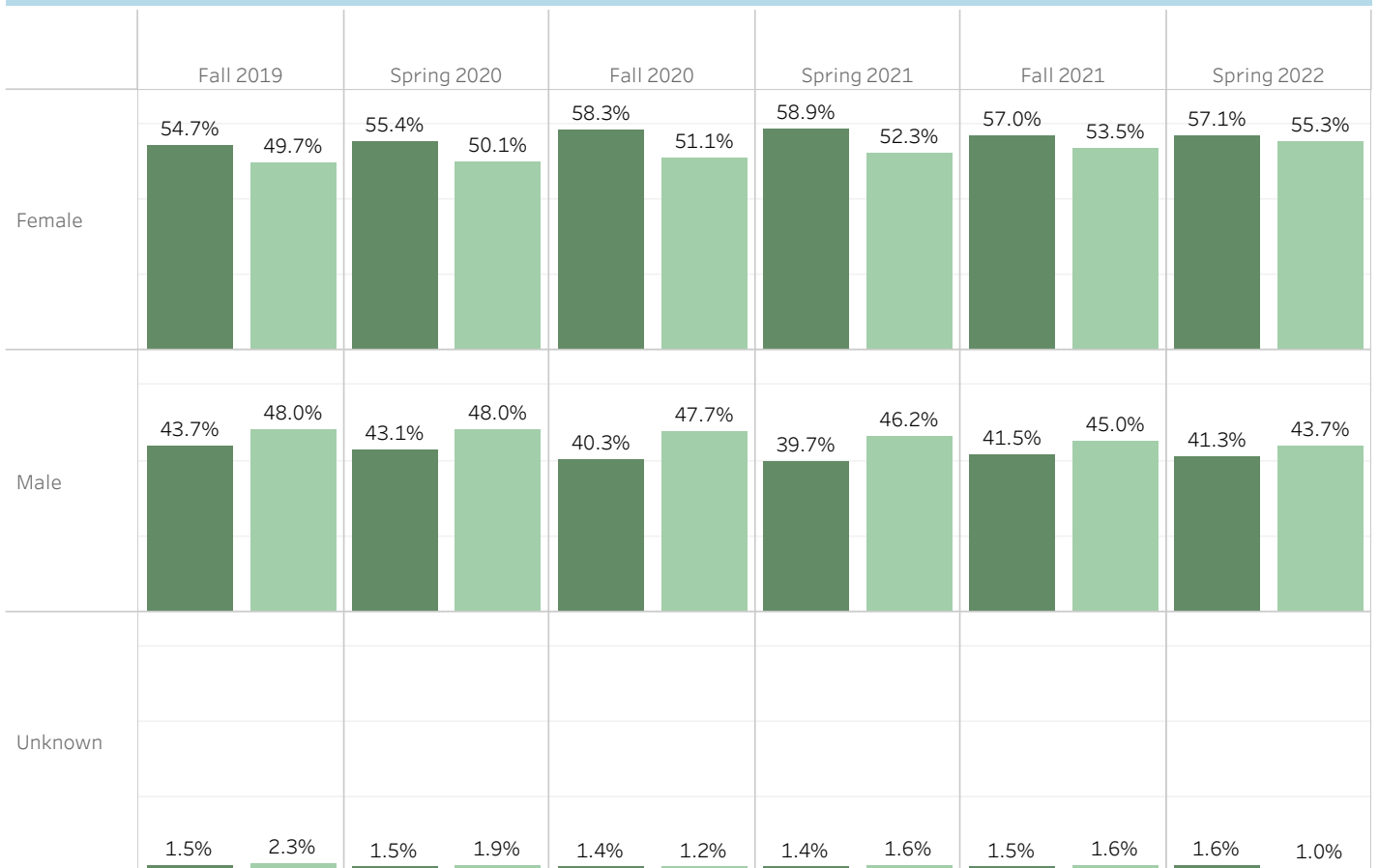
Enrollments in English Courses by Gender

0% 100%

	Fall 2019	Spring 2020	Fall 2020	Spring 2021	Fall 2021	Spring 2022
Female	522	468	453	402	440	431
Male	504	449	423	355	370	341
Unknown	24	18	11	12	13	8
Total	1,050	935	887	769	823	780

Comparison of COM and English Enrollments by Gender

% of COM Gender % of Dept Gender



Credit course enrollments include students enrolled on first census day and those at the end of the term who received a grade in a course. Course enrollment is not an unduplicated student headcount. A student is counted once for each course enrolled.

*Spring 2020 course enrollment, retention and success numbers may be impacted by the COVID-19 pandemic and transition to remote learning. Students electing to receive an Early Withdrawal ("EW") grade are included in Spring 2020 course enrollment numbers. In course retention and success calculations, EW grades are treated as the same as a traditional "W" grade: "not retained" and "not successful" enrollments, though they are not included in students' GPA calculation.

Enrollments by Campus/DE

Enrollments in English Courses by Campus/DE



	Fall 2019	Spring 2020	Fall 2020	Spring 2021	Fall 2021	Spring 2022
Kentfield	919	755				483
Indian Valley	25	26				18
Hybrid					330	86
Online	106	154	887			
Online (Asynchronous)				214	195	193
Online (Synchronous)				555	298	
Total	1,050	935	887	769	823	780

Comparison of COM and English Enrollments by Campus/DE



	Fall 2019		Spring 2020		Fall 2020	Spring 2021	Fall 2021	Spring 2022
Kentfield	77.5%	87.5%	73.0%	80.7%				63.9% 61.9%
Indian Valley	9.2%	2.4%	10.3%	2.8%				9.9% 2.3%
Hybrid							32.1% 40.1%	3.5% 11.0%
Online	8.9%	10.1%	12.2%	16.5%	89.4%	100.0%		
Online (Asynchronous)						26.5% 27.8%	19.2% 23.7%	19.3% 24.7%
Online (Synchronous)						63.9% 72.2%	48.3% 36.2%	

Credit course enrollments include students enrolled on first census day and those at the end of the term who received a grade in a course. Course enrollment is not an unduplicated student headcount. A student is counted once for each course enrolled.

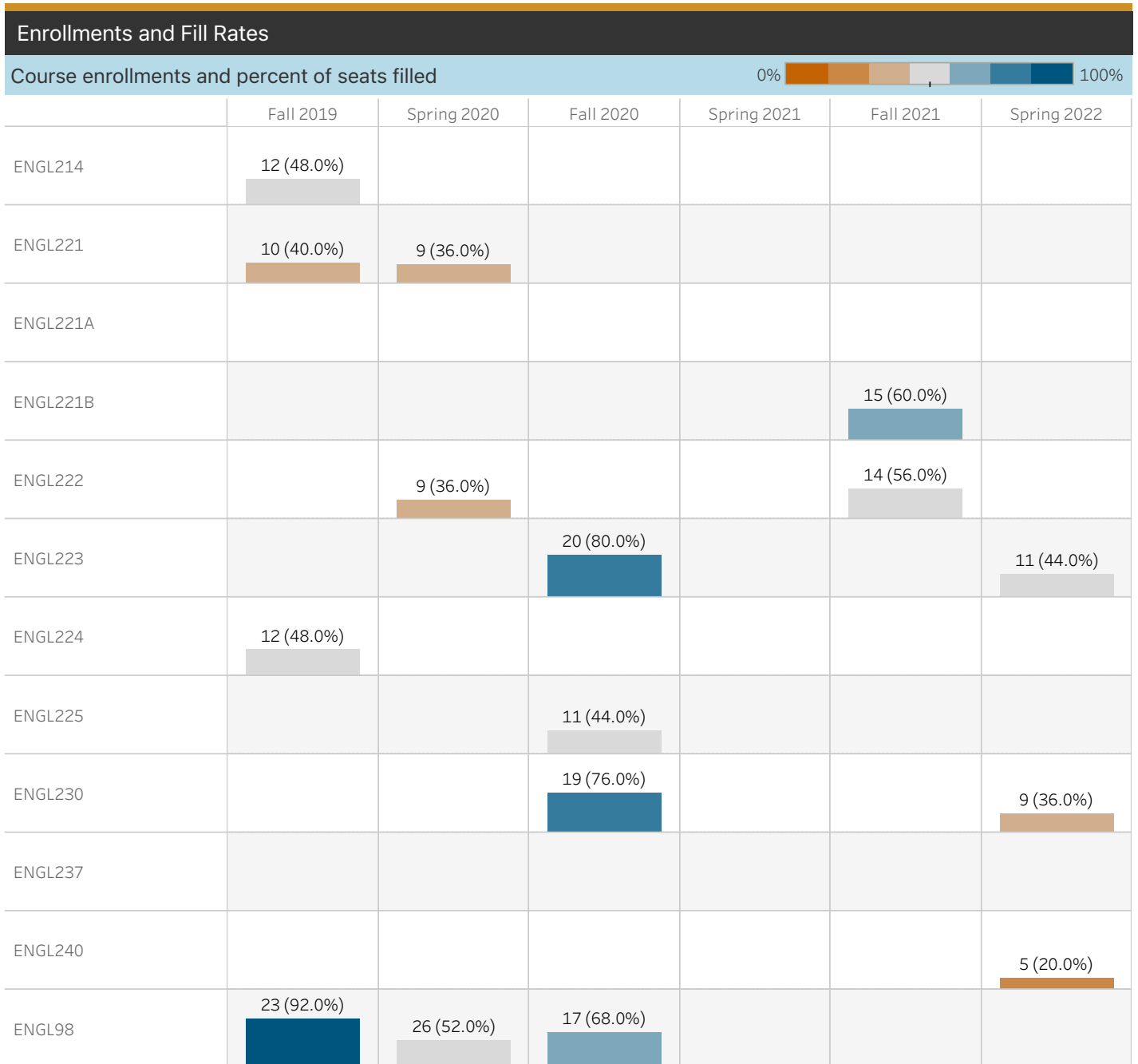
*Spring 2020 course enrollment, retention and success numbers may be impacted by the COVID-19 pandemic and transition to remote learning. Students electing to receive an Early Withdrawal ("EW") grade are included in Spring 2020 course enrollment numbers. In course retention and success calculations, EW grades are treated as the same as a traditional "W" grade: "not retained" and "not successful" enrollments, though they are not included in students' GPA calculation.

Enrollments and Fill Rates

Course enrollments and percent of seats filled

0% 100%

	Fall 2019	Spring 2020	Fall 2020	Spring 2021	Fall 2021	Spring 2022
ENGL092L	4 (2.0%)	1 (0.5%)				
ENGL098					13 (52.0%)	
ENGL098SL	20 (100.0%)	34 (85.0%)	15 (75.0%)		22 (55.0%)	20 (100.0%)
ENGL120	62 (82.7%)	33 (66.0%)	42 (84.0%)		20 (80.0%)	11 (44.0%)
ENGL120A	28 (56.0%)	10 (40.0%)				
ENGL120AC			19 (76.0%)			
ENGL120SL	43 (107.5%)	20 (100.0%)	32 (80.0%)		30 (75.0%)	38 (95.0%)
ENGL150	560 (82.4%)	433 (70.3%)	403 (86.7%)		389 (86.4%)	347 (78.0%)
ENGL150C			24 (60.0%)		52 (86.7%)	49 (81.7%)
ENGL150N	12 (10.0%)	11 (7.8%)				
ENGL150NC			10 (50.0%)		17 (42.5%)	10 (16.7%)
ENGL151	141 (70.5%)	168 (84.0%)	139 (69.5%)		126 (63.0%)	137 (68.5%)
ENGL155	99 (99.0%)	154 (105.5%)	124 (82.7%)		120 (80.0%)	133 (106.4%)
ENGL202	24 (96.0%)	19 (76.0%)	20 (80.0%)		20 (80.0%)	19 (76.0%)
ENGL203		8 (53.3%)	2 (13.3%)		2 (13.3%)	1 (6.7%)



Course Success and Retention

Course Success and Retention by Term

■ % Retained ■ % Success

	Fall 2019	Spring 2020	Fall 2020	Spring 2021	Fall 2021	Spring 2022
ENGL092L	100.0% 50.0%	100.0% 100.0%				
ENGL098					53.8% 30.8%	
ENGL098SL	90.0% 70.0%	67.6% 76.7%	86.7% 73.3%	100.0% 61.9%	95.5% 66.7%	95.0% 68.4%
ENGL120	74.2% 55.7%	54.5% 58.6%	95.2% 78.6%	91.3% 65.2%	100.0% 80.0%	72.7% 36.4%
ENGL120A	89.3% 77.8%	50.0% 50.0%				
ENGL120AC			78.9% 63.2%			
ENGL120SL	83.7% 74.4%	65.0% 72.2%	90.6% 62.5%	81.8% 63.6%	96.7% 80.0%	86.8% 70.3%
ENGL150	81.4% 68.9%	56.8% 60.4%	84.7% 69.2%	74.7% 57.6%	76.1% 65.1%	79.3% 65.6%
ENGL150C			91.7% 75.0%	77.8% 70.4%	94.2% 86.0%	93.9% 89.6%
ENGL150N						
ENGL150NC						
ENGL151	79.4% 70.5%	64.9% 70.8%	81.2% 68.8%	87.3% 77.0%	75.4% 66.9%	75.2% 68.5%
ENGL155	81.8% 74.5%	76.6% 84.2%	78.2% 71.8%	83.3% 65.6%	76.7% 68.8%	85.6% 74.4%
ENGL202	95.8% 86.4%	42.1% 47.1%	90.0% 80.0%	95.0% 95.0%	75.0% 76.5%	89.5% 70.6%
ENGL203		62.5% 62.5%	100.0% 100.0%	100.0% 100.0%	50.0% 50.0%	100.0% 100.0%

Course Success and Retention

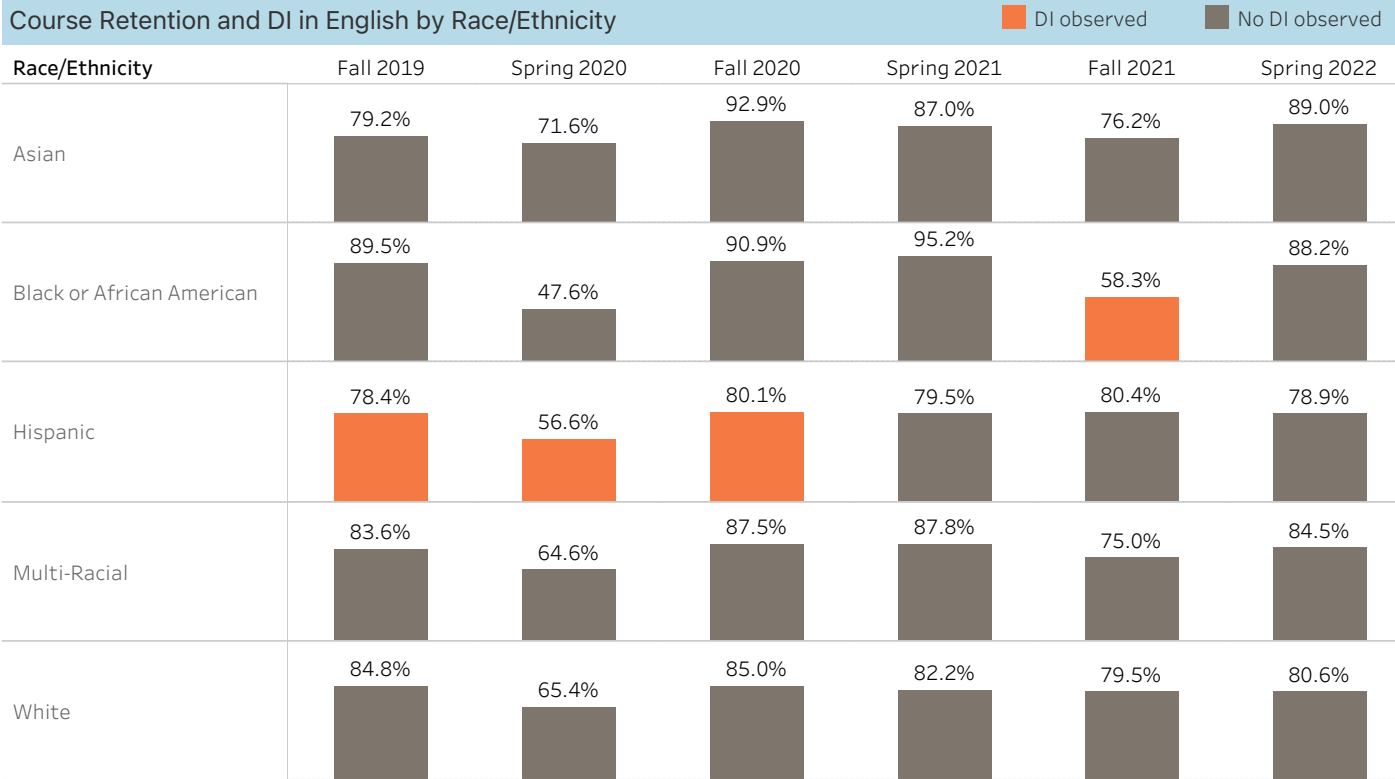
Course Success and Retention by Term

■ % Retained ■ % Success

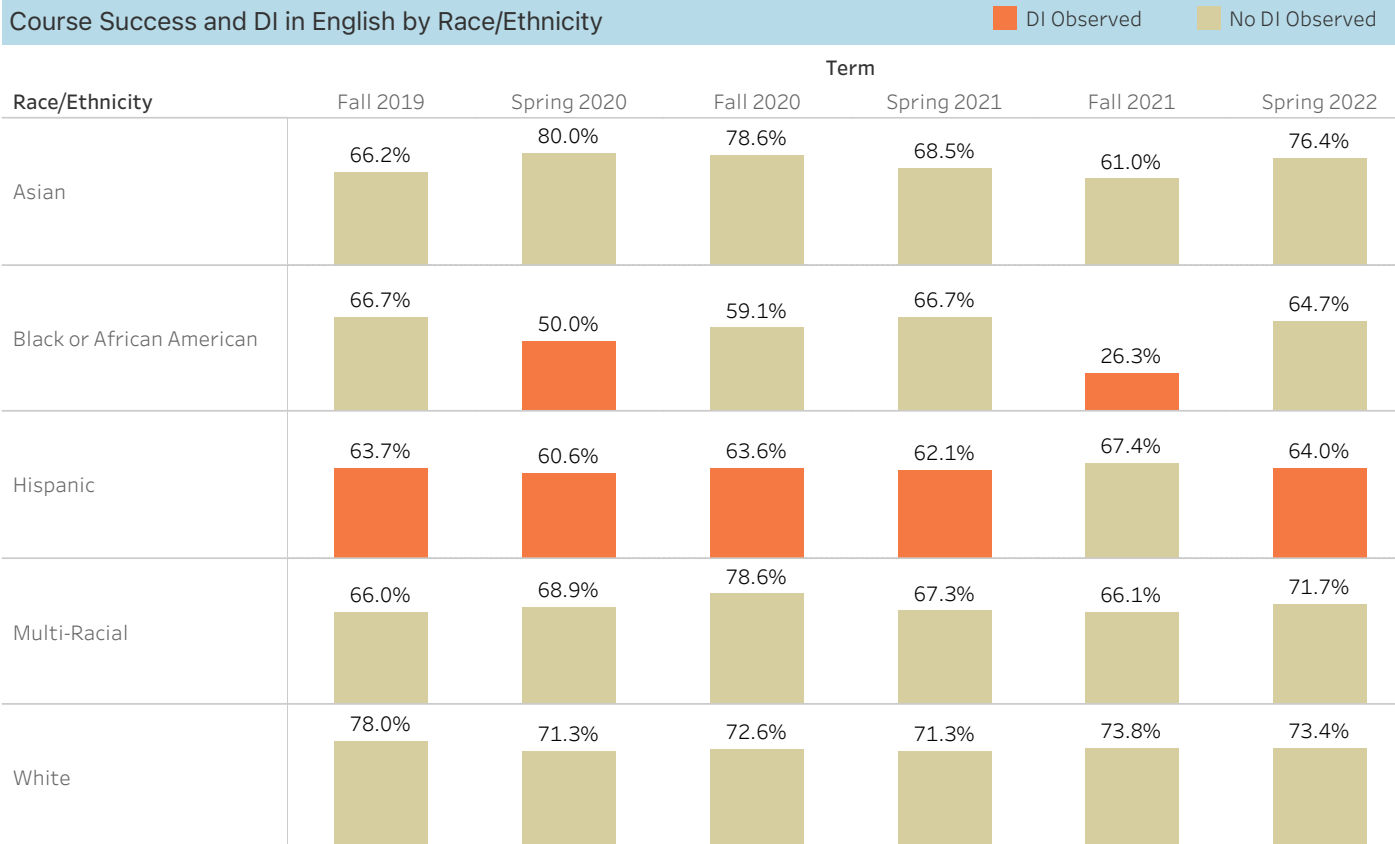
	Fall 2019	Spring 2020	Fall 2020	Spring 2021	Fall 2021	Spring 2022
ENGL214	100.0% 100.0%					
ENGL221	100.0% 70.0%	55.6% 71.4%				
ENGL221A				83.3% 66.7%		
ENGL221B					80.0% 66.7%	
ENGL222		100.0% 100.0%			76.9% 83.3%	
ENGL223			80.0% 70.0%			81.8% 88.9%
ENGL224	100.0% 75.0%			93.8% 93.8%		
ENGL225			90.9% 81.8%			
ENGL230			84.2% 63.2%			55.6% 50.0%
ENGL237				71.4% 64.3%		
ENGL240						80.0% 80.0%
ENGL98	52.2% 62.5%	46.2% 48.0%	88.2% 58.8%	93.3% 60.0%		

Course Success and Retention by Race/Ethnicity

Course Retention and DI in English by Race/Ethnicity



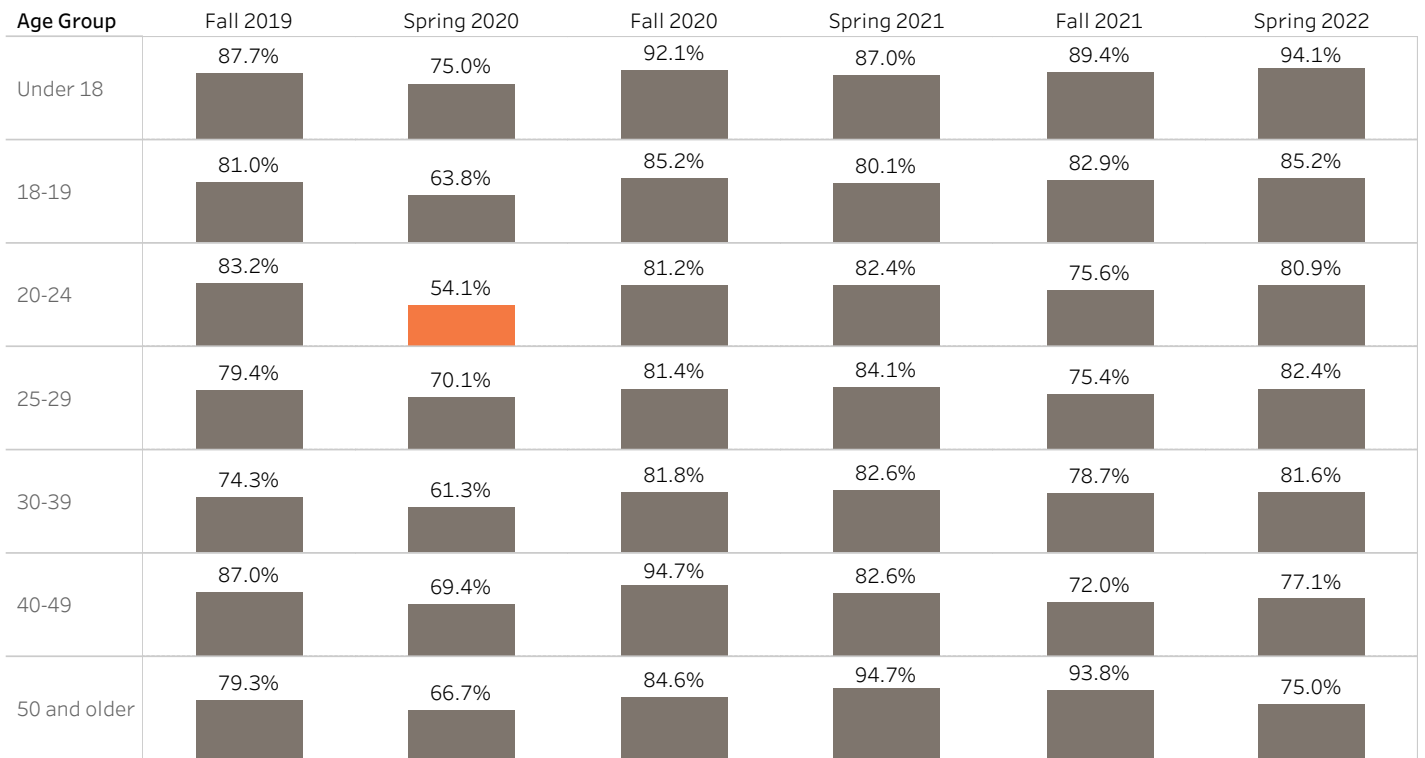
Course Success and DI in English by Race/Ethnicity



Course Success and Retention by Age Group

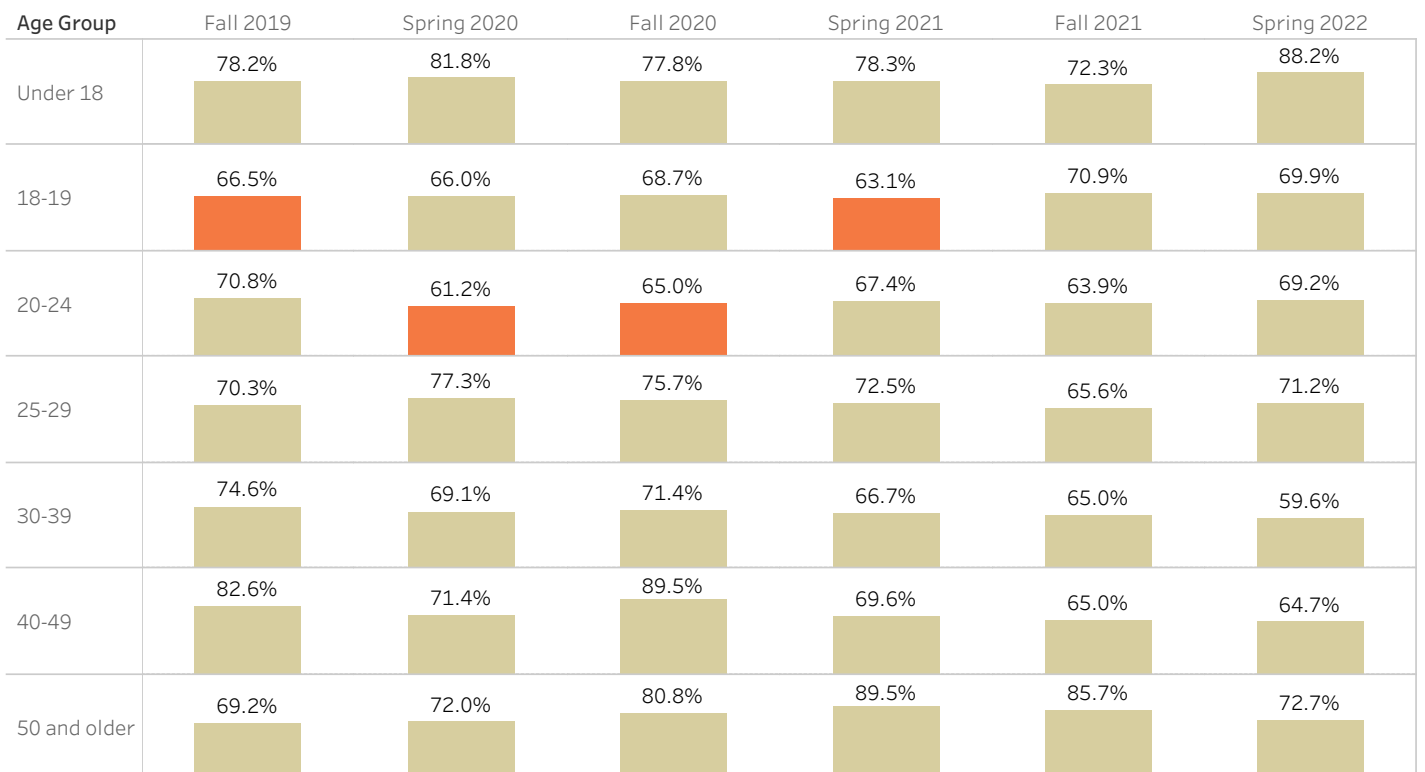
Course Retention and DI in English by Age Group

DI observed No DI observed



Course Success and DI in English by Age Group

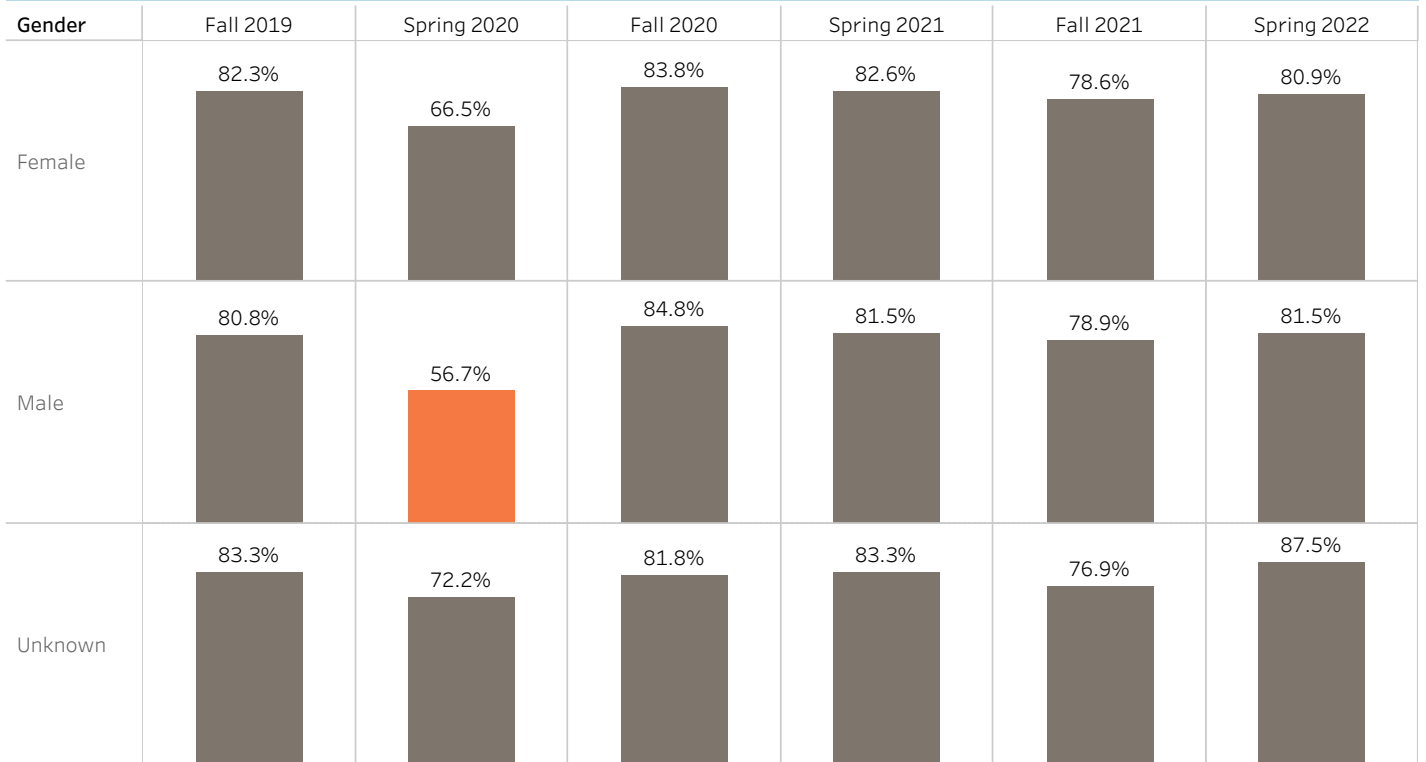
DI Observed No DI Observed



Course Success and Retention by Gender

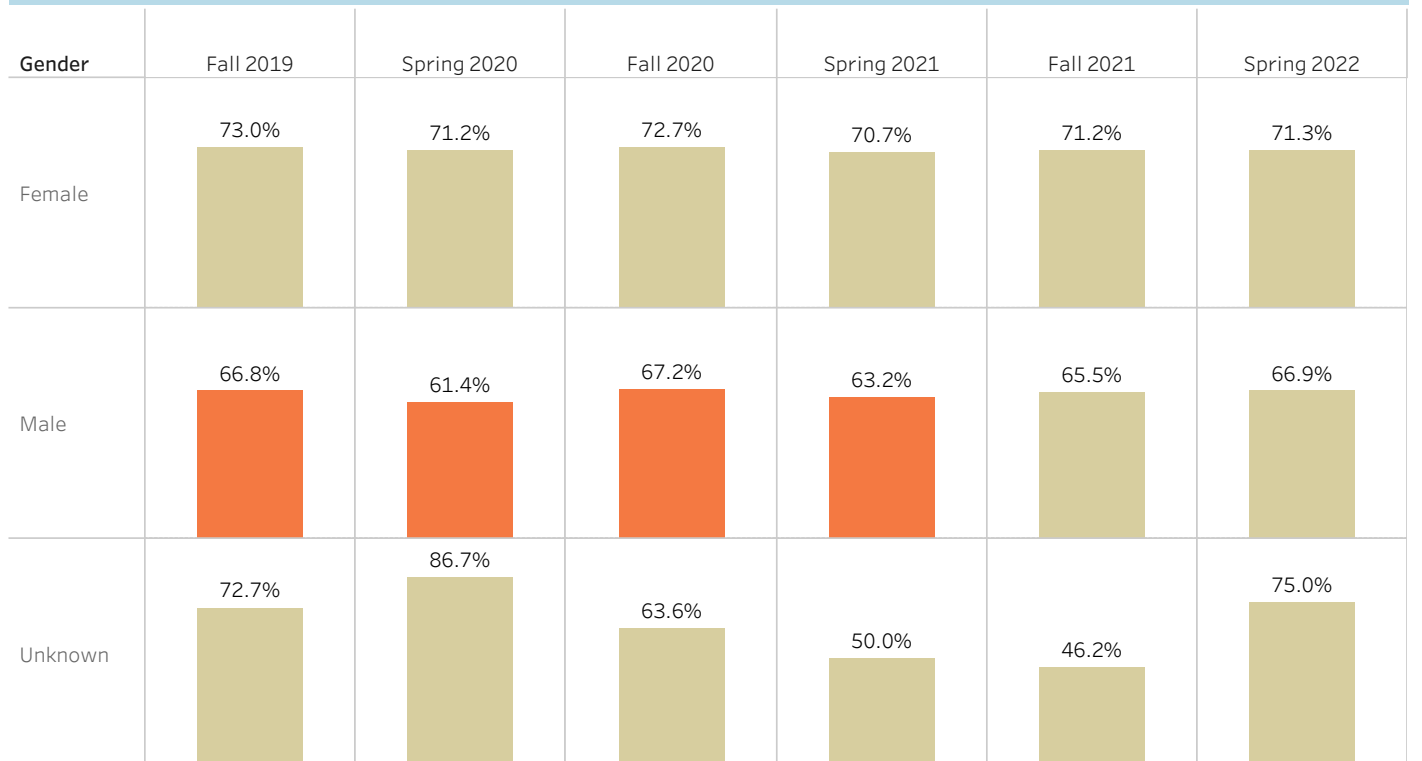
Course Retention and DI in English by Gender

DI observed No DI observed



Course Success and DI in English by Gender

DI Observed No DI Observed



Course Success and Retention by Campus/DE

Course Retention and DI in English by Campus/DE

■ DI observed ■ No DI observed

Campus/DE	Fall 2019	Spring 2020	Fall 2020	Spring 2021	Fall 2021	Spring 2022
Kentfield	83.2% ■ No DI observed	63.6% ■ No DI observed				85.5% ■ No DI observed
Indian Valley	64.0% ■ No DI observed	38.5% ■ DI observed				72.2% ■ No DI observed
Hybrid					83.6% ■ No DI observed	80.2% ■ No DI observed
Online	71.7% ■ DI observed	57.8% ■ No DI observed	84.2% ■ No DI observed			
Online (Asynchronous)				74.1% ■ DI observed	65.1% ■ DI observed	72.0% ■ DI observed
Online (Synchronous)				85.2% ■ No DI observed	82.2% ■ No DI observed	

Course Success and DI in English by Campus/DE

■ DI Observed ■ No DI Observed

Campus/DE	Fall 2019	Spring 2020	Fall 2020	Spring 2021	Fall 2021	Spring 2022
Kentfield	71.1% ■ No DI Observed	67.5% ■ No DI Observed				74.0% ■ No DI Observed
Indian Valley	50.0% ■ No DI Observed	43.5% ■ DI Observed				50.0% ■ No DI Observed
Hybrid					66.9% ■ No DI Observed	60.0% ■ No DI Observed
Online	64.6% ■ No DI Observed	67.2% ■ No DI Observed	70.0% ■ No DI Observed			
Online (Asynchronous)				59.9% ■ DI Observed	62.9% ■ No DI Observed	63.7% ■ DI Observed
Online (Synchronous)				69.7% ■ No DI Observed	73.0% ■ No DI Observed	