



ROAD TO A SUCCESSFUL FACILITIES PLAN

UPDATE AND OPTIONS MEETING

Agenda

1. Statistical Data
2. Input Summary
3. Campus Discussions
 - Kentfield Campus
 - Indian Valley Campus
 - Bolinas
4. Next Activities

A Detailed Look at the Process

**Support Information
for the District Wide
Master Plan**

**Option
Development**

**Final
District Wide
Master Plan**

0	3	4	5	3	2	0	0	0	0	4	4	4
0	0	0	2	2	1	2	2	1	2	4	4	6
5	6	4	3	3	4	3	0	3	2	4	4	4
0	2	3	5	5	4	4	1	4	4	3	4	4
4	4	5	4	3	4	2	1	4	4	3	3	3
2	4	4	4	4	4	0	0	2	2	4	4	6
3	6	6	6	5	4	3	2	2	1	3	4	4
0	3	4	4	5	4	0	0	0	0	4	4	4
4	3	0	4	5	4	0	1	1	1	3	3	3
0	3	4	4	4	4	1	0	2	2	4	2	2
2	4	4	4	4	4	1	0	0	0	3	3	3
1	2	4	2	3	4	1	0	0	0	1	4	4

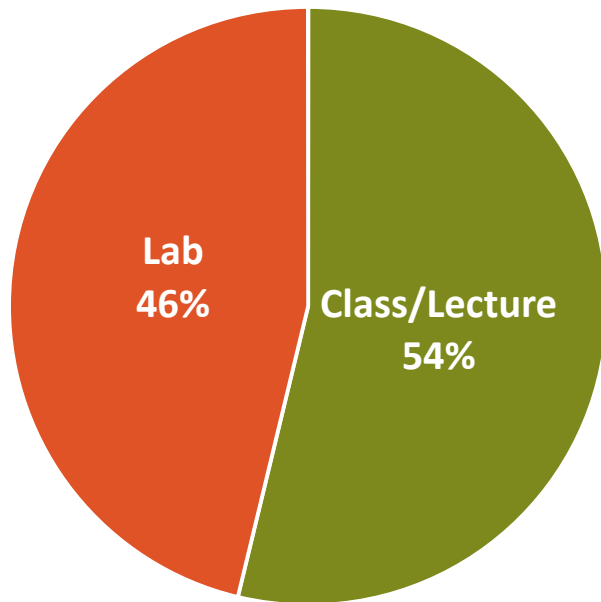
STATISTICAL DATA



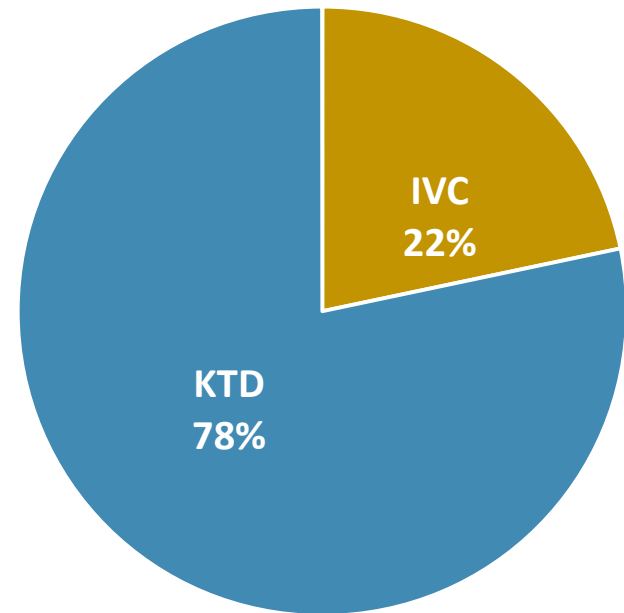
Statistical Data

Current Instructional Space Breakdown

Room Type
(College-Wide)



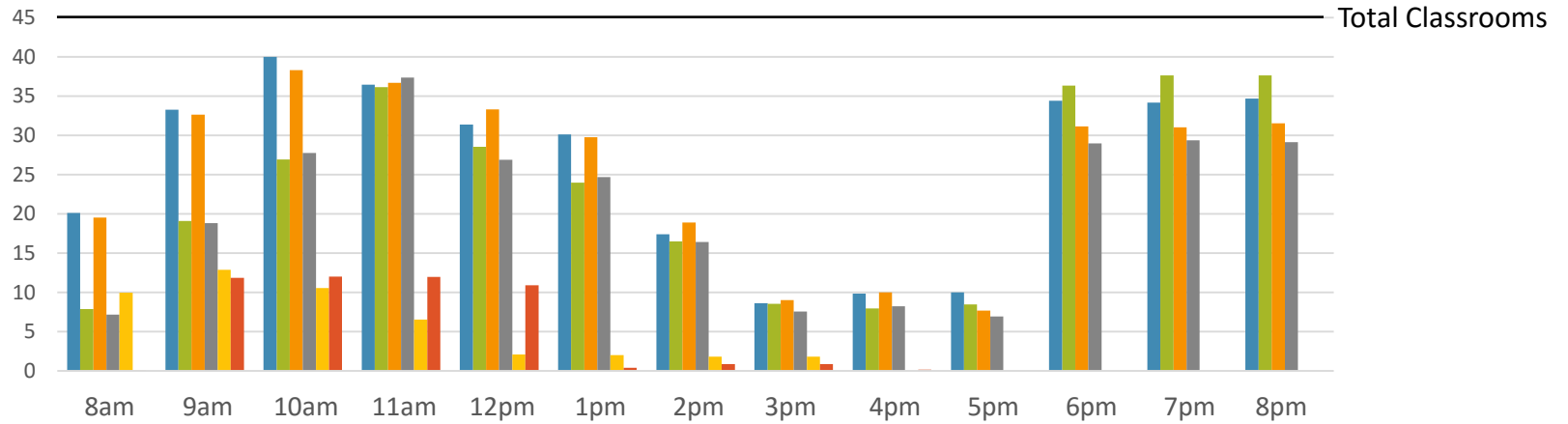
Campus Distribution of
Instructional Space



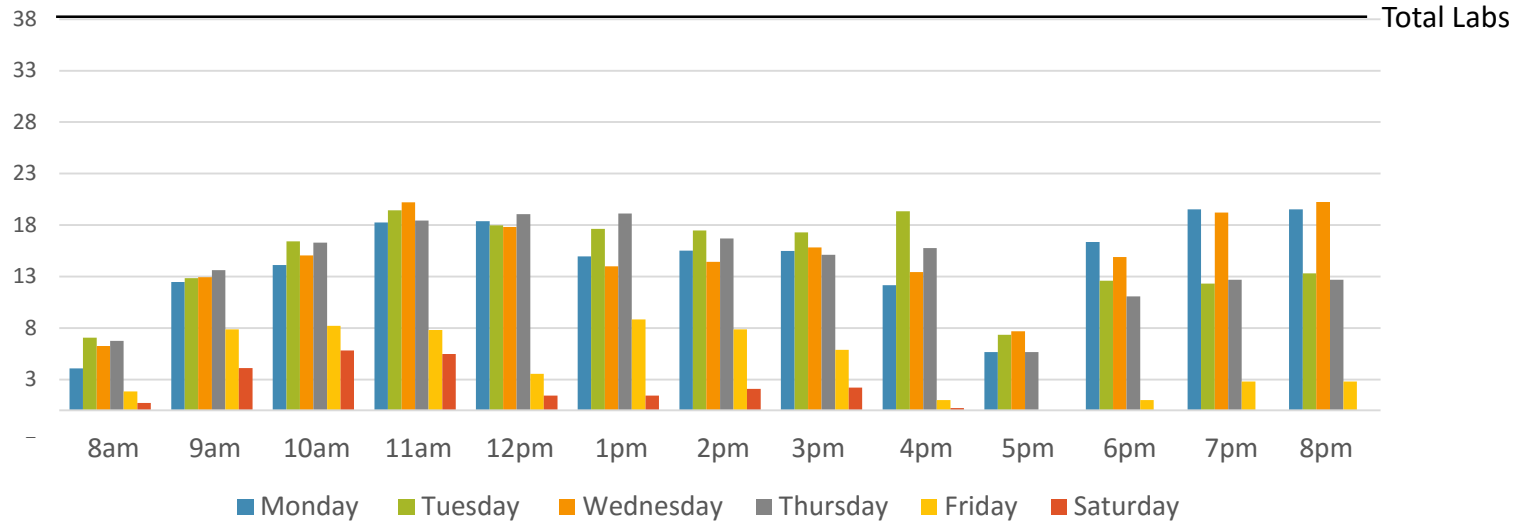


Kentfield Campus

Classroom Use by Hour

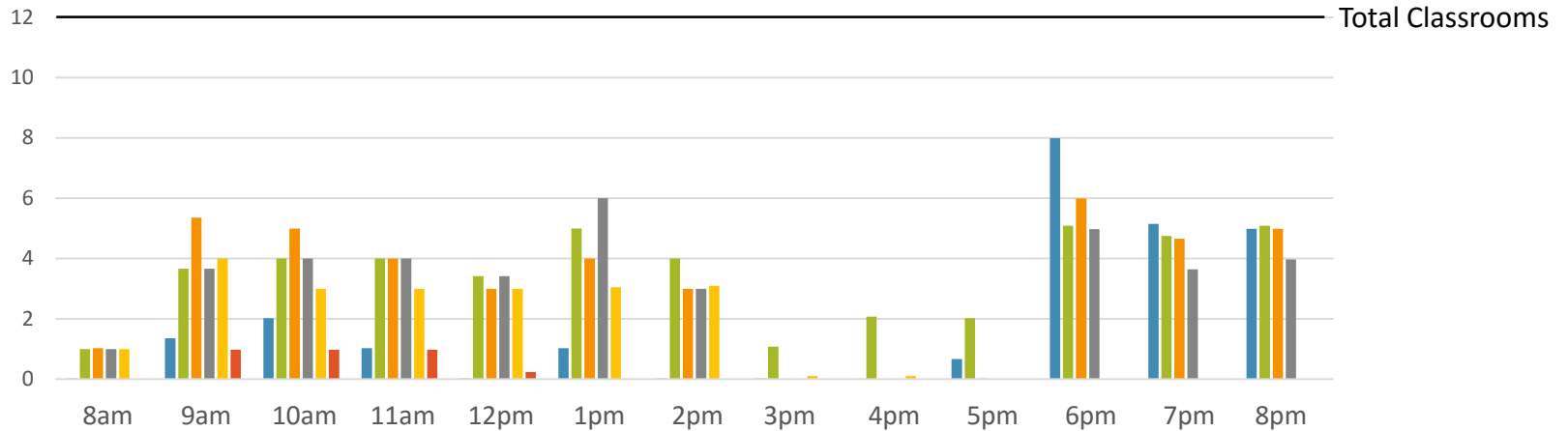


Lab Use by Hour

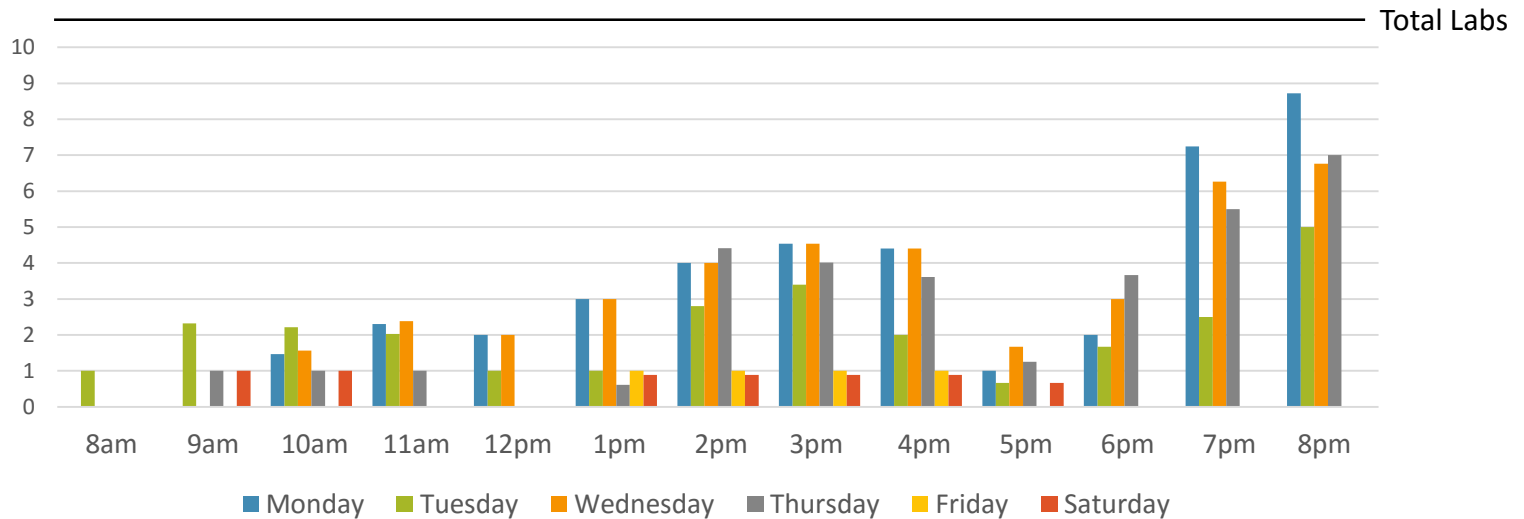


Indian Valley Campus

Classroom Use by Hour



Lab Use by Hour





INPUT SUMMARY

Campus Surveys

**Tell us about what you think
of your college environment?**

- * Buildings
- * Classrooms
- * Outdoor Spaces
- * Hangout Spots
- * Study Spots

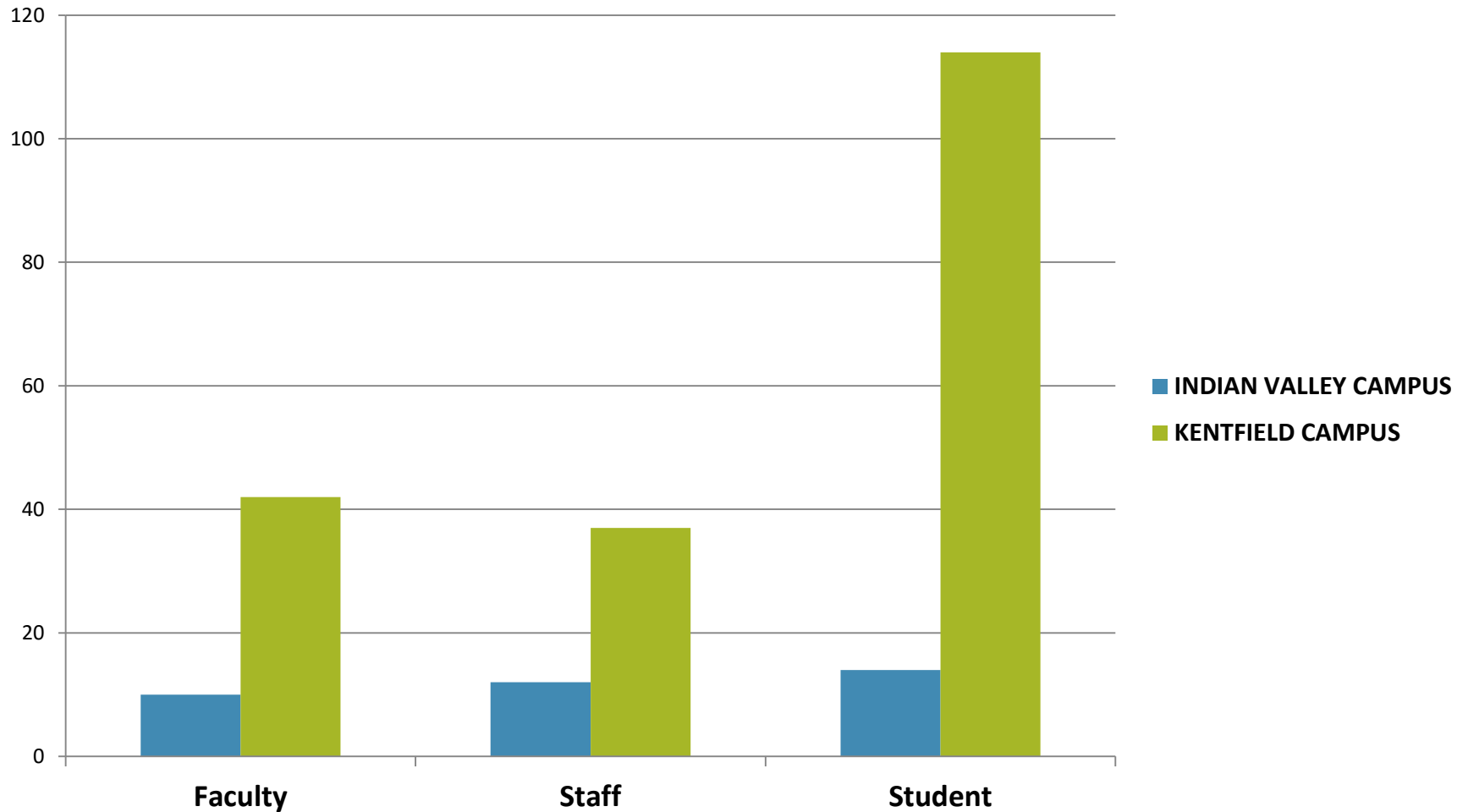
**Take the
survey and let
the student
perspective be
heard!**



https://lep2.formstack.com/forms/marin_student

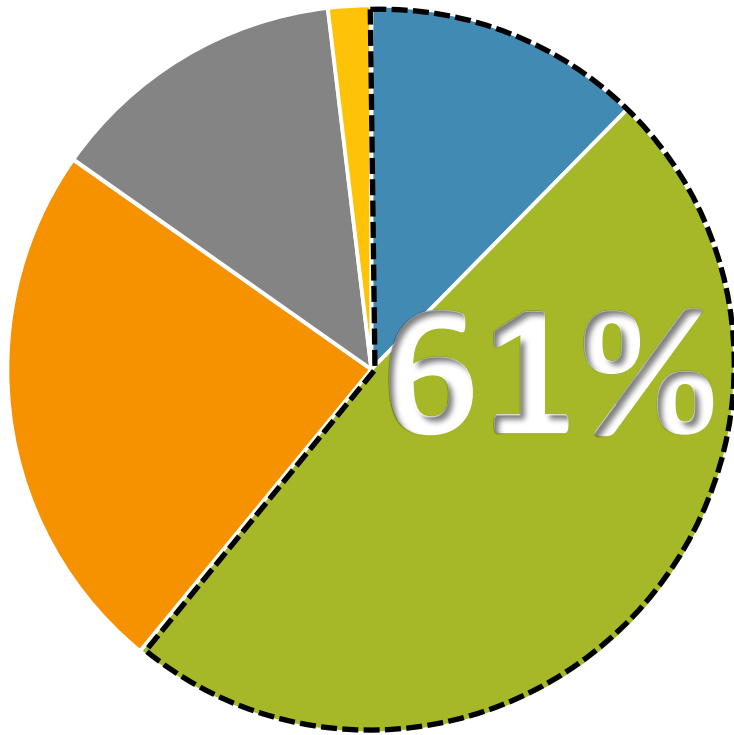
- 3 Surveys Developed
 - Students
 - Faculty
 - Staff
- Distribution
 - Emails
 - Flyers handed out in common areas
 - Stacks of flyers distributed to Deans and other meeting attendees

Who responded to the survey?

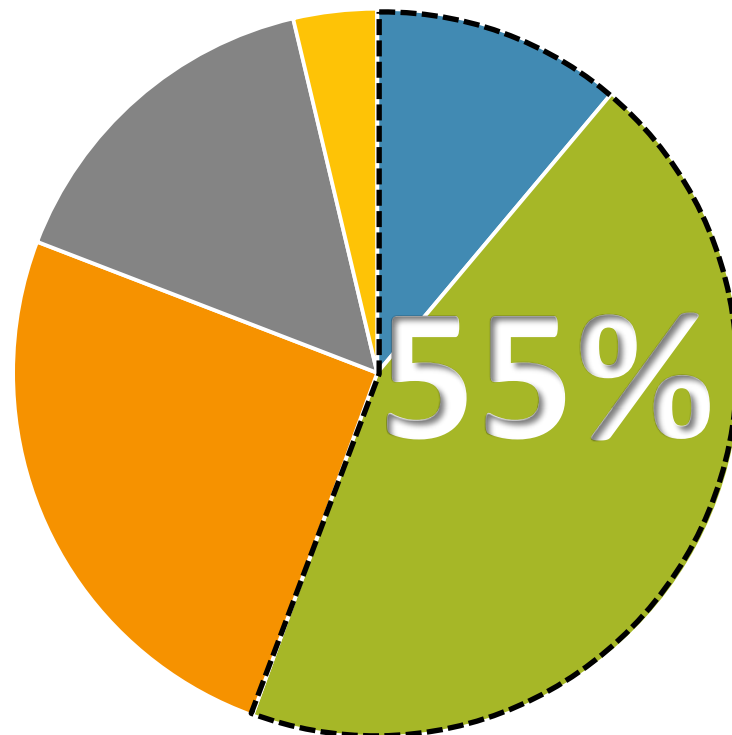


Overall Satisfaction

Campus Environment
(Faculty & Staff)



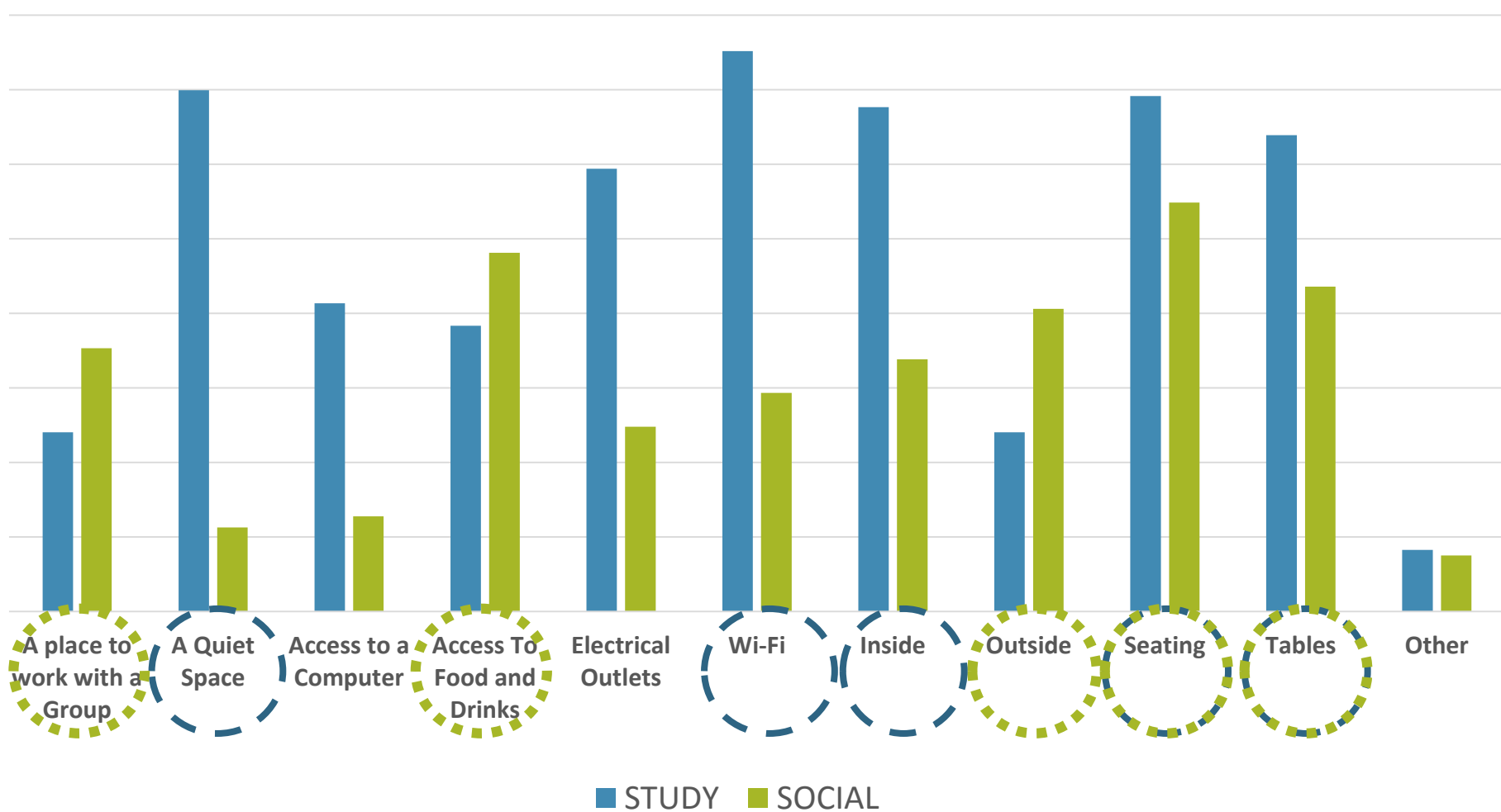
Classroom Environment
(Faculty & Students)



- Very Satisfied
- Satisfied
- Neutral
- Unsatisfied
- Very Unsatisfied

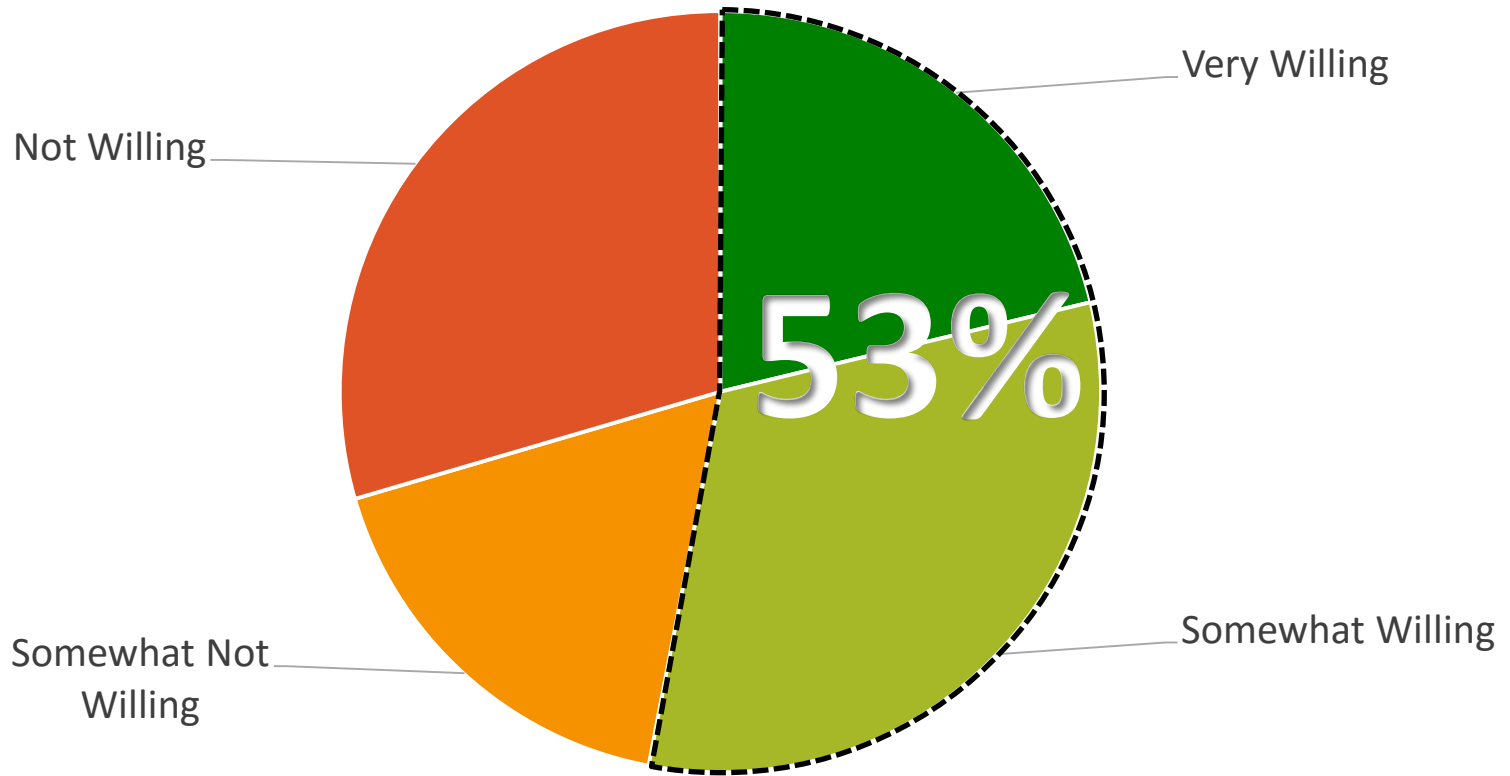
Student Perspective - Attributes

What attributes do you look for when choosing a space ?



Campus Choice

Would you be willing to attend classes at both main campuses in a semester?



Internal Meetings Completed

1-3 meetings with each of these groups. Over 30 meetings completed.

- ✓ PRAC
- ✓ Technology Committee
- ✓ Technology Staff
- ✓ Facilities Planning Committee
- ✓ Academic Senate
- ✓ Classified Senate
- ✓ Campus Forums
- ✓ Executive Cabinet
- ✓ ASCOM
- ✓ ESCOM
- ✓ Maintenance and Facilities
- ✓ Deans & Directors
- ✓ College Council

External Meetings Completed

Over 15 meetings completed.

- ✓ County of Marin
- ✓ Marin County Office of Education
- ✓ City of Larkspur
- ✓ City of Novato
- ✓ Town of Ross
- ✓ Community Forums
- ✓ Kentfield Planning Advisory Board
- ✓ Marin Brain Injury Network
- ✓ League of Women Voters
- ✓ Friends of IVC
- ✓ Friends of Corte Madera Creek
- ✓ Friends of Kentfield
- ✓ The Branson School

Common Themes

- Provide for growth to 2012 level of enrollment (Strategic Plan Initiative)
- Provide for new and enhanced programs
- Maintenance / Upkeep to keep new buildings fresh
- Community Spaces
- Technology Needs
- Need for campus orientation and wayfinding

Frequently Expressed Ideas

Kentfield Campus

- Student Services and Learning Resource Center – need updates
- Library does not meet 21st century requirements
- Student Services need to be centralized and easily found
- Replace Village Square
- Parking needs to be organized/expanded
- There is a high appreciation of the Arboretum
- Campus is difficult to navigate

Frequently Expressed Ideas

Indian Valley Campus

- Identify the Role of IVC
- Create the atmosphere of a more active and inhabited campus
- Provide stronger links between buildings-Create a campus
- Continue Community use
- Maintain non-student oriented administrative functions

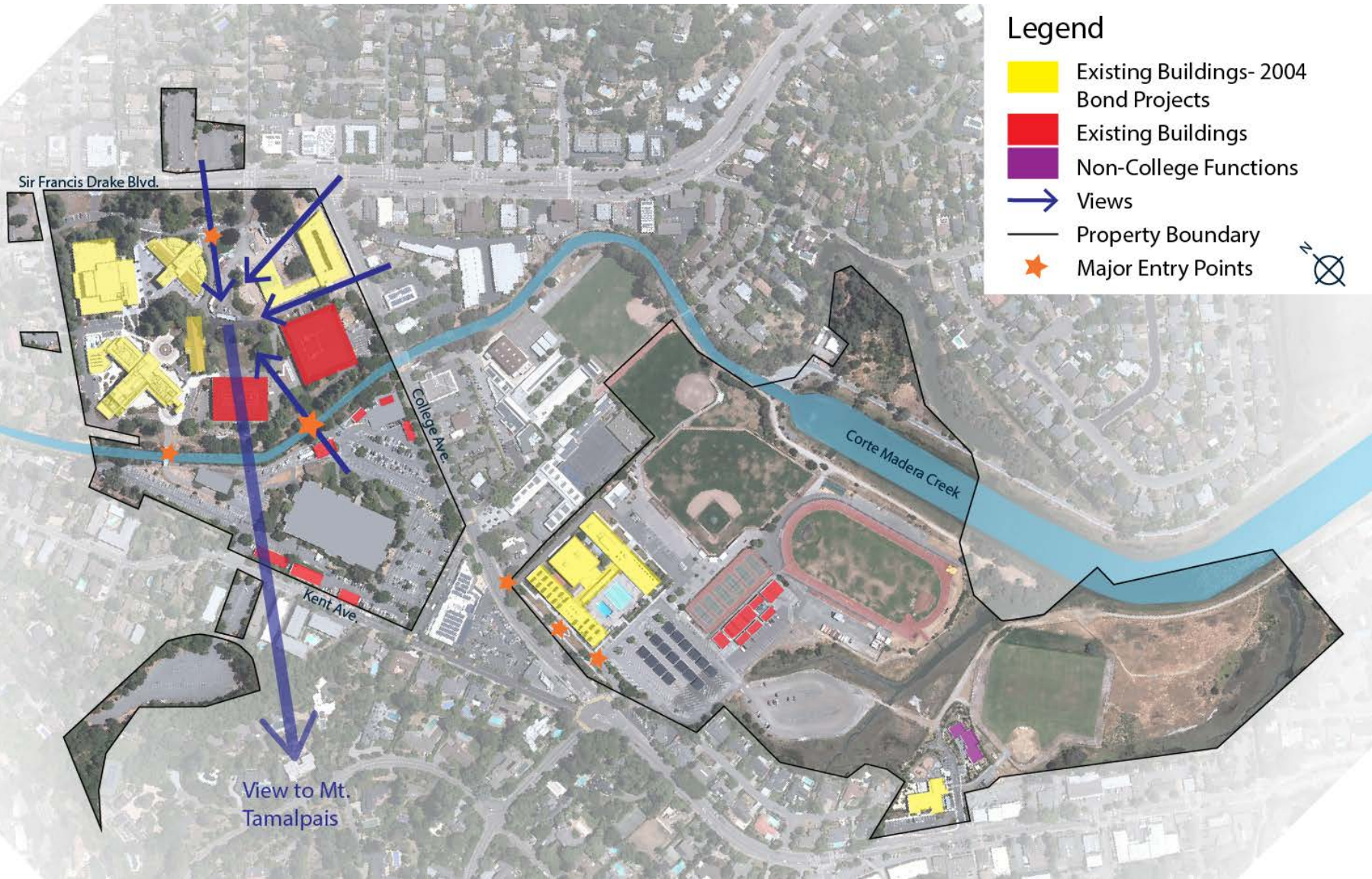
Bolinas

- Make it a useable center

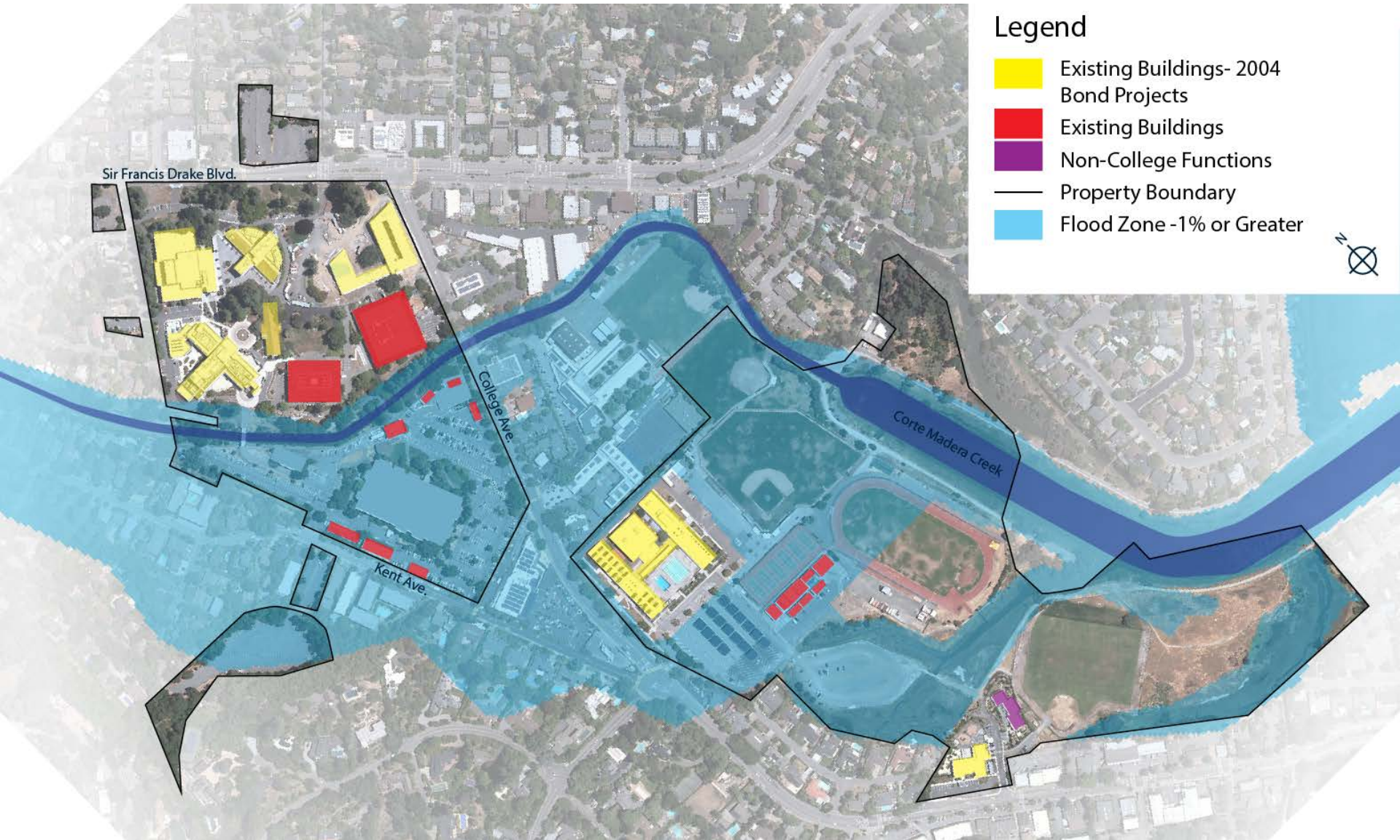


CAMPUS CONTEXT

Kentfield Campus



Flood Zone

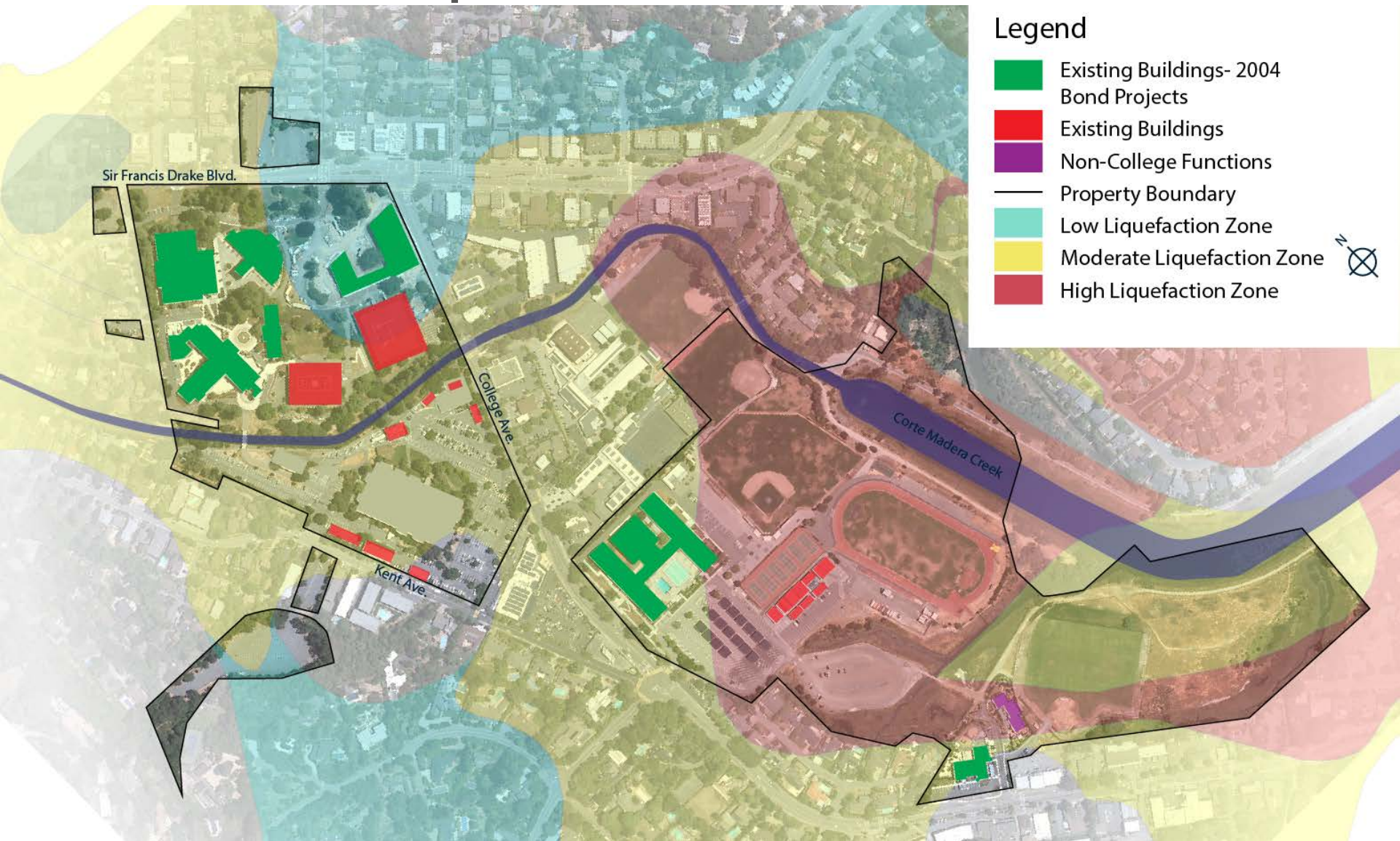


Legend

- Existing Buildings- 2004 Bond Projects
- Existing Buildings
- Non-College Functions
- Property Boundary
- Flood Zone -1% or Greater



Liquefaction Zones

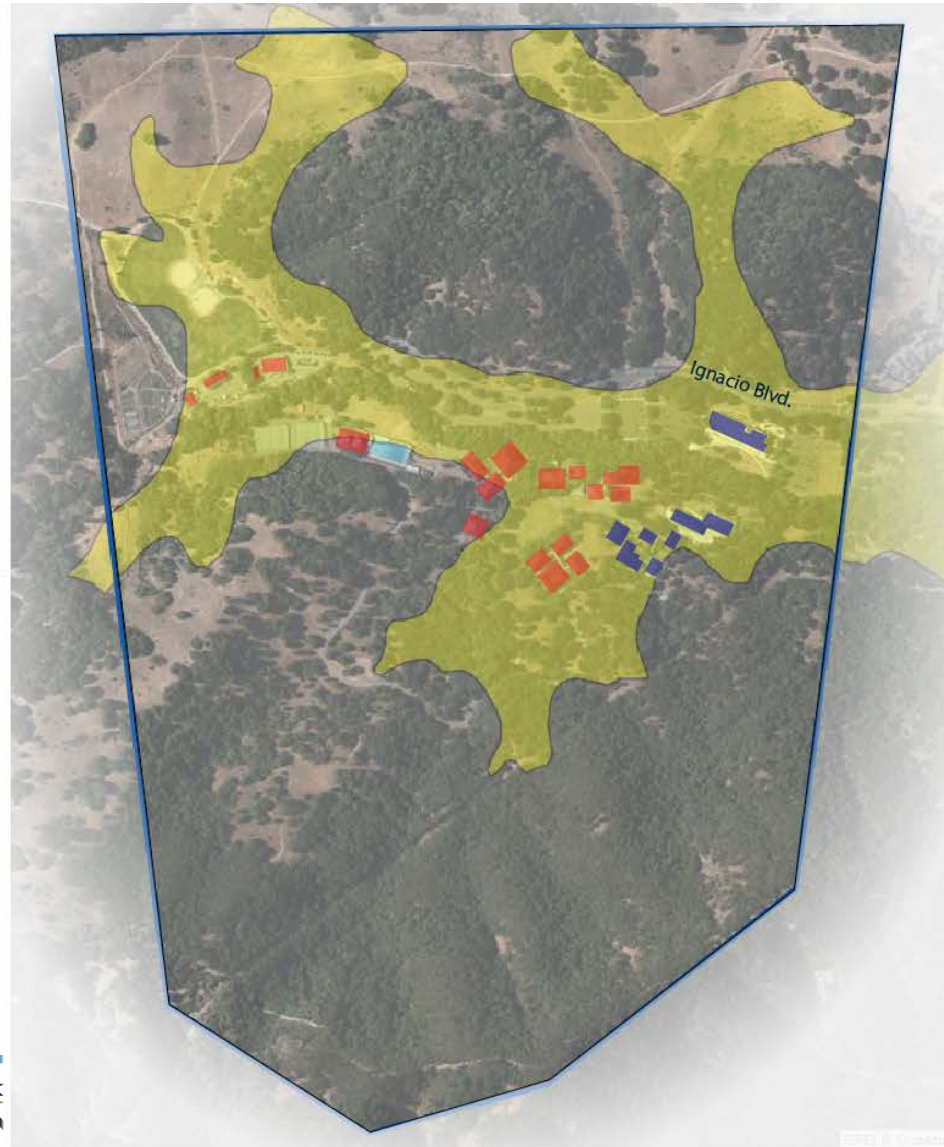


Legend

- Existing Buildings- 2004 Bond Projects
- Existing Buildings
- Non-College Functions
- Property Boundary
- Low Liquefaction Zone
- Moderate Liquefaction Zone
- High Liquefaction Zone



Indian Valley Campus Liquefaction Zones



Legend

- Existing Buildings- 2004 Bond Projects
- Existing Buildings
- Property Boundary
- Low Liquefaction Zone
- Moderate Liquefaction Zone
- High Liquefaction Zone



Bolinas Campus Tsunami Inundation Zone



Legend

- Existing Buildings
- Non-College Functions
- Property Boundary
- Tsunami Inundation Zone



Preliminary Outcomes – Kentfield

Explore changes to Student Services and Library Resource Buildings to:

- Consolidated students services
- Update to 21st century
- Provide replacement for Village Square
- Develop flexible space for future programs

Improve wayfinding and navigation by:

- Expand and connect the Arboretum
- Expand connections to the grassy knoll
- Develop a welcoming South entrance
- Organize parking and possibly expand
- Strengthen North South connection
- Increase spaces for outdoor socializing

Preliminary Outcomes – Indian Valley

Define identity and
increase use by:

- Consolidate space used by instruction to increase utilization
- Explore partnerships such as leasing space, housing, etc.
- Create better connection to Kentfield through the use of technology
- Develop the heart of the campus

Next Activities

Option Development

- Internal Campus Meetings
- On-Site Community Meetings
- External Community Meetings

Draft Report

- Final Board Approval February/March 2016