

PROPOSED BUILDING PROGRAM

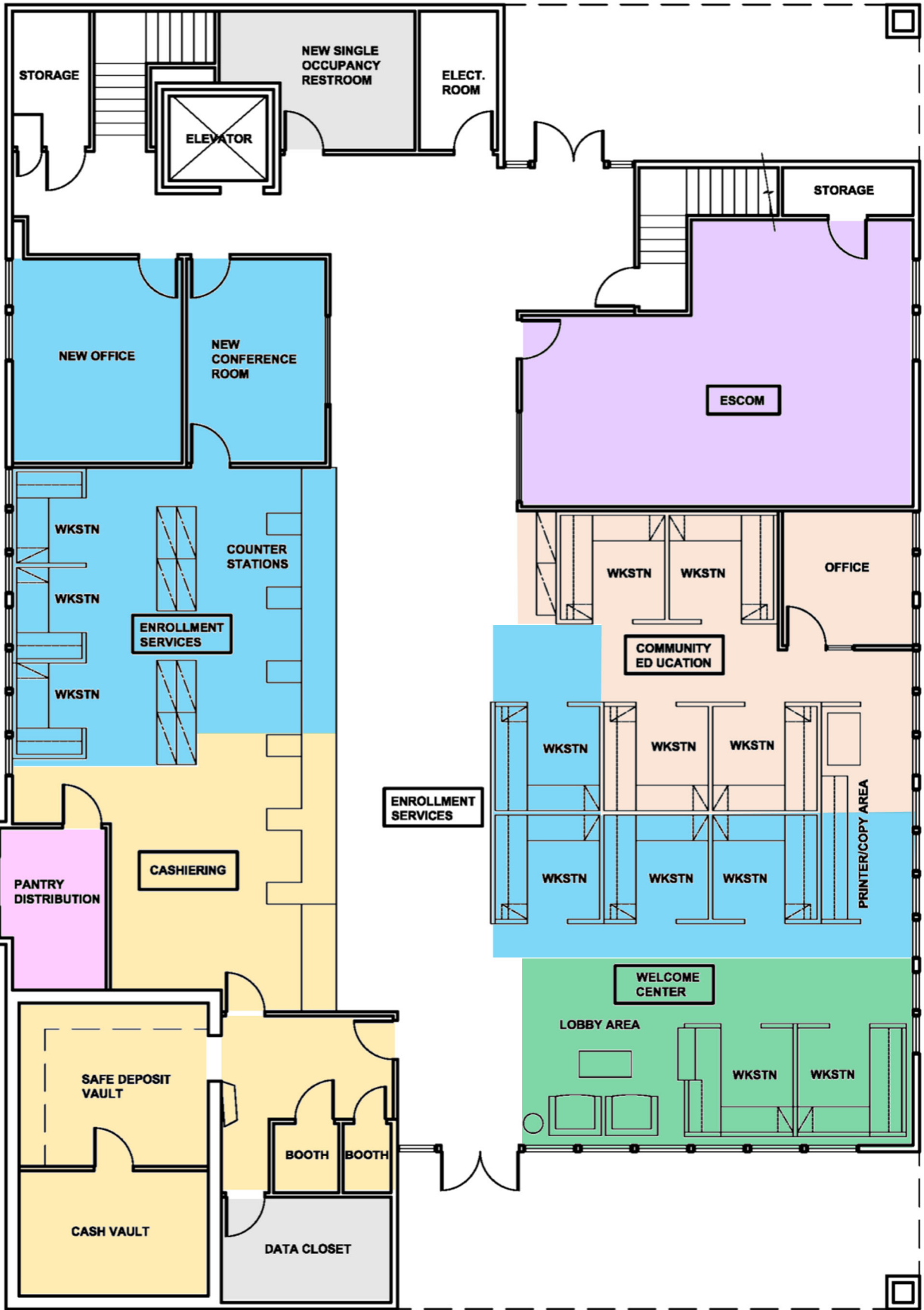
Space	Area	Notes
<u>FIRST FLOOR:</u>		
Welcome Center	210 SF	<i>Area from Group 4 Final Program</i>
Enrollment Services	2,975 SF	<i>Area from Group 4 Final Program</i>
Cashiering	200 SF	<i>Adjusted area higher than what was shown in the Group 4 Final Program</i>
Pantry Distribution	100 SF	<i>New proposed area</i>
ESCOM	560 SF	<i>Area from Group 4 Final Program</i>
Community Education	520 SF	<i>Area from Group 4 Final Program</i>
Total First Floor Area =	4,565 SF	
Gross SF Multiplier @ .3	1,370SF	
Total Square Footage =	5,935 SF	<i>5,958 SF is the area take off from the Existing Floor Plan*</i>
<u>SECOND FLOOR:</u>		
New Office	150 SF	<i>User TBD</i>
Breakroom	270 SF	<i>Existing Area</i>
Mens Restroom	131 SF	<i>Existing Area</i>
Womens Restroom	121 SF	<i>Existing Area</i>
Utility / Data Closet	138 SF	<i>Existing Area</i>
Total Second Floor Area =	810 SF	
Circulation & Elevator Area =	519 SF	
Total Square Footage =	1,329 SF	<i>1,329 SF is the area take off from the Existing Floor Plan*</i>

Notes:

** The areas noted are based on a takeoff from CAD plans developed from an available floor plan; consequently, areas are subject to change once building is measured and dimensions confirmed.*

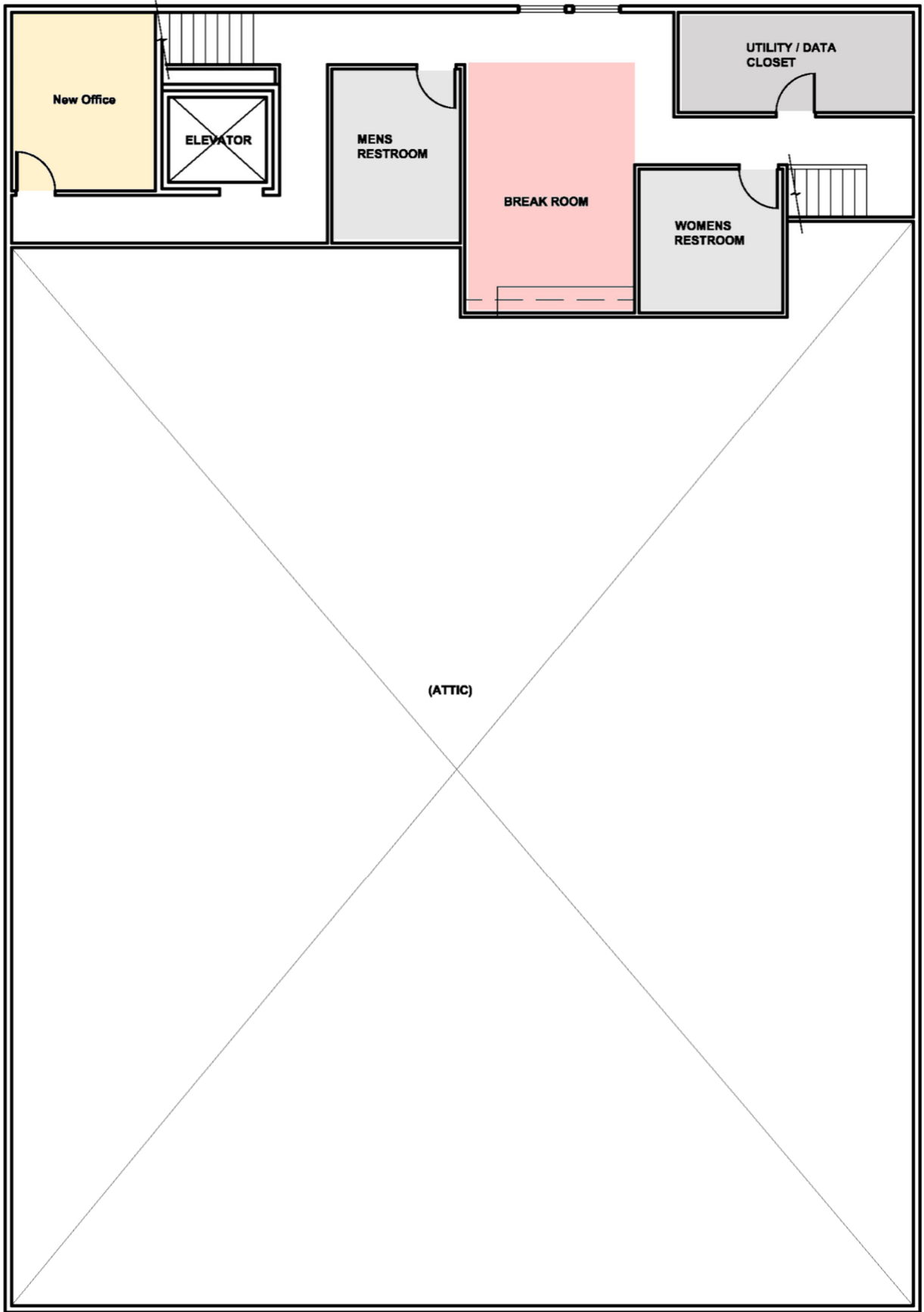
Proposed Building Program
 (830 College Avenue, Kentfield, CA)

Date: October 29, 2020



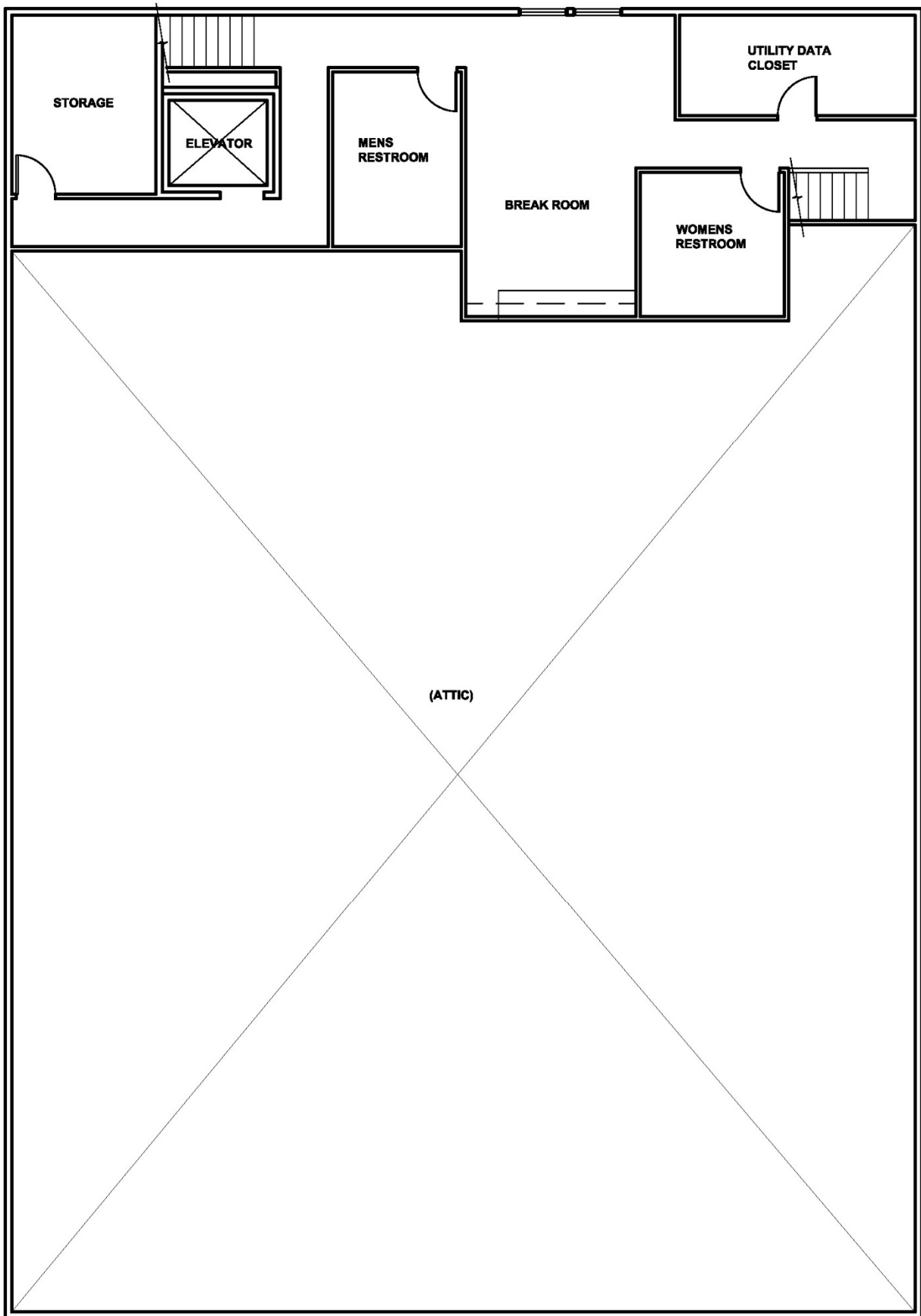
Proposed First Floor Plan
 (830 College Avenue, Kentfield, CA)

Date: October 29, 2020



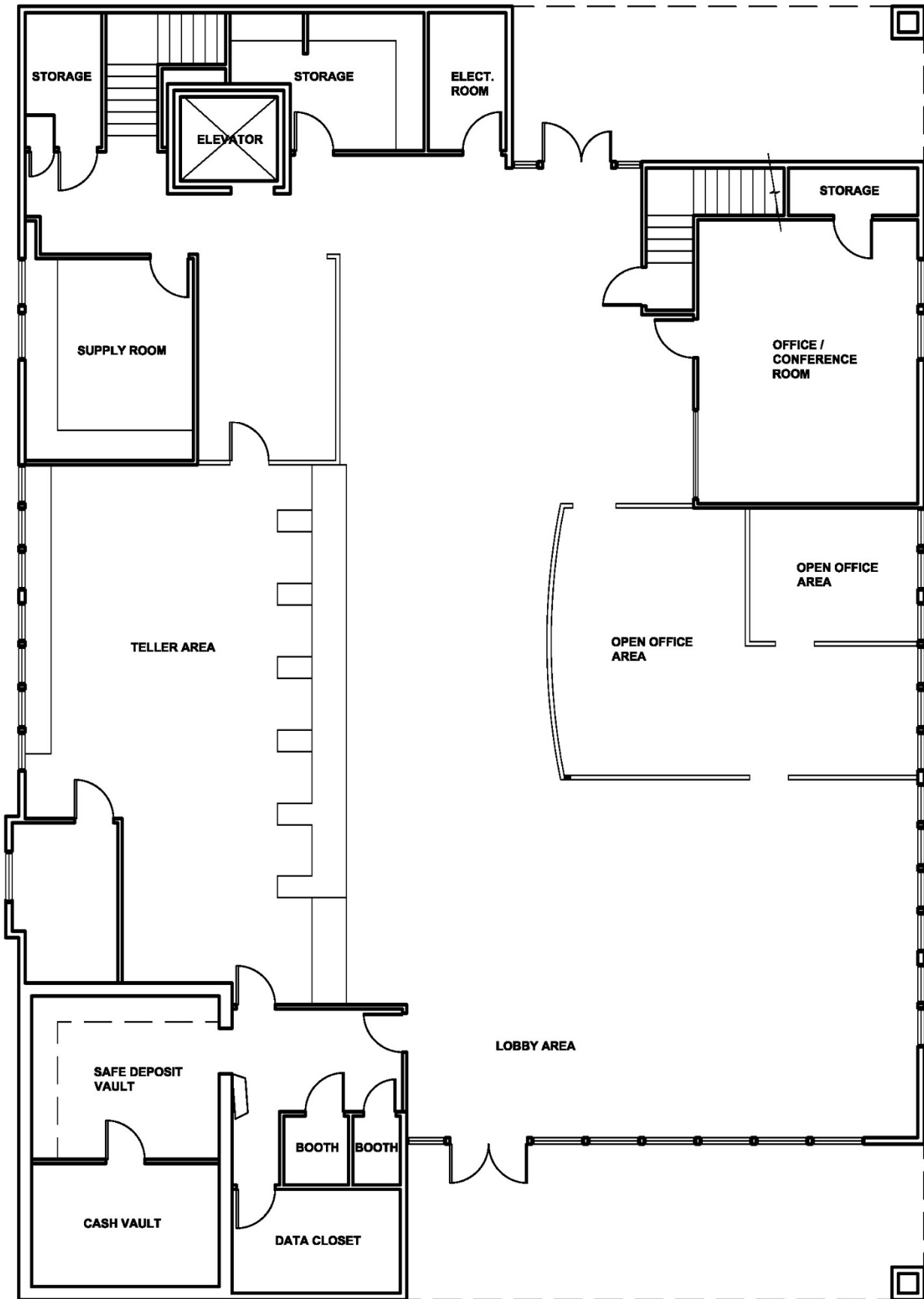
Proposed Second Floor Plan
(830 College Avenue, Kentfield, CA)

Date: October 29, 2020



Existing Second Floor Plan
(830 College Avenue, Kentfield, CA)

Date: October 29, 2020



Existing First Floor Plan
(830 College Avenue, Kentfield, CA)

Date: October 29, 2020